

## LM158/LM258/LM358/LM2904 Low Power Dual Operational Amplifiers

Check for Samples: [LM158-N](#), [LM258-N](#), [LM2904-N](#), [LM358-N](#)

### FEATURES

- Available in 8-Bump micro SMD chip sized package, (See AN-1112)
- Internally frequency compensated for unity gain
- Large dc voltage gain: 100 dB
- Wide bandwidth (unity gain): 1 MHz (temperature compensated)
- Wide power supply range:
  - Single supply: 3V to 32V
  - or dual supplies:  $\pm 1.5\text{V}$  to  $\pm 16\text{V}$
- Very low supply current drain (500  $\mu\text{A}$ )—essentially independent of supply voltage
- Low input offset voltage: 2 mV
- Input common-mode voltage range includes ground
- Differential input voltage range equal to the power supply voltage
- Large output voltage swing

### UNIQUE CHARACTERISTICS

- In the linear mode the input common-mode voltage range includes ground and the output voltage can also swing to ground, even though operated from only a single power supply voltage.
- The unity gain cross frequency is temperature compensated.
- The input bias current is also temperature compensated.

### ADVANTAGES

- Two internally compensated op amps
- Eliminates need for dual supplies
- Allows direct sensing near GND and  $V_{\text{OUT}}$  also goes to GND
- Compatible with all forms of logic
- Power drain suitable for battery operation

### DESCRIPTION

The LM158 series consists of two independent, high gain, internally frequency compensated operational amplifiers which were designed specifically to operate from a single power supply over a wide range of voltages. Operation from split power supplies is also possible and the low power supply current drain is independent of the magnitude of the power supply voltage.

Application areas include transducer amplifiers, dc gain blocks and all the conventional op amp circuits which now can be more easily implemented in single power supply systems. For example, the LM158 series can be directly operated off of the standard +5V power supply voltage which is used in digital systems and will easily provide the required interface electronics without requiring the additional  $\pm 15\text{V}$  power supplies.

The LM358 and LM2904 are available in a chip sized package (8-Bump micro SMD) using National's micro SMD package technology.

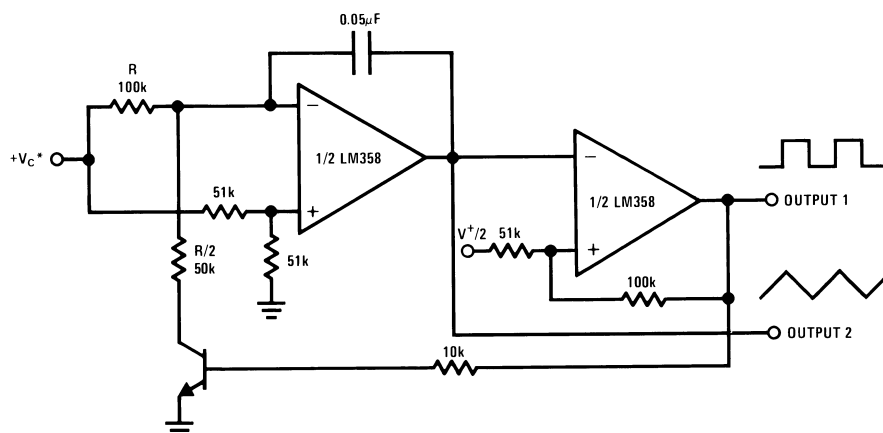


Please be aware that an important notice concerning availability, standard warranty, and use in critical applications of Texas Instruments semiconductor products and disclaimers thereto appears at the end of this data sheet.

All trademarks are the property of their respective owners.

PRODUCTION DATA information is current as of publication date. Products conform to specifications per the terms of the Texas Instruments standard warranty. Production processing does not necessarily include testing of all parameters.

Copyright © 2004–2005, Texas Instruments Incorporated

**VOLTAGE CONTROLLED OSCILLATOR (VCO)**

These devices have limited built-in ESD protection. The leads should be shorted together or the device placed in conductive foam during storage or handling to prevent electrostatic damage to the MOS gates.

**Absolute Maximum Ratings<sup>(1)</sup>**

|                                                                                                                                     | <b>LM158/LM258/LM358</b>    | <b>LM2904</b>   |
|-------------------------------------------------------------------------------------------------------------------------------------|-----------------------------|-----------------|
|                                                                                                                                     | <b>LM158A/LM258A/LM358A</b> |                 |
| Supply Voltage, $V^+$                                                                                                               | 32V                         | 26V             |
| Differential Input Voltage                                                                                                          | 32V                         | 26V             |
| Input Voltage                                                                                                                       | -0.3V to +32V               | -0.3V to +26V   |
| Power Dissipation <sup>(2)</sup>                                                                                                    |                             |                 |
| Molded DIP                                                                                                                          | 830 mW                      | 830 mW          |
| Metal Can                                                                                                                           | 550 mW                      |                 |
| Small Outline Package (M)                                                                                                           | 530 mW                      | 530 mW          |
| micro SMD                                                                                                                           | 435mW                       |                 |
| Output Short-Circuit to GND                                                                                                         |                             |                 |
| (One Amplifier) <sup>(3)</sup>                                                                                                      |                             |                 |
| $V^+ \leq 15V$ and $T_A = 25^\circ C$                                                                                               | Continuous                  | Continuous      |
| Input Current ( $V_{IN} < -0.3V$ ) <sup>(4)</sup>                                                                                   | 50 mA                       | 50 mA           |
| Operating Temperature Range                                                                                                         |                             |                 |
| LM358                                                                                                                               | 0°C to +70°C                | -40°C to +85°C  |
| LM258                                                                                                                               | -25°C to +85°C              |                 |
| LM158                                                                                                                               | -55°C to +125°C             |                 |
| Storage Temperature Range                                                                                                           | -65°C to +150°C             | -65°C to +150°C |
| Lead Temperature, DIP                                                                                                               |                             |                 |
| (Soldering, 10 seconds)                                                                                                             | 260°C                       | 260°C           |
| Lead Temperature, Metal Can                                                                                                         |                             |                 |
| (Soldering, 10 seconds)                                                                                                             | 300°C                       | 300°C           |
| Soldering Information                                                                                                               |                             |                 |
| Dual-In-Line Package                                                                                                                |                             |                 |
| Soldering (10 seconds)                                                                                                              | 260°C                       | 260°C           |
| Small Outline Package                                                                                                               |                             |                 |
| Vapor Phase (60 seconds)                                                                                                            | 215°C                       | 215°C           |
| Infrared (15 seconds)                                                                                                               | 220°C                       | 220°C           |
| See AN-450 "Surface Mounting Methods and Their Effect on Product Reliability" for other methods of soldering surface mount devices. |                             |                 |
| ESD Tolerance <sup>(5)</sup>                                                                                                        | 250V                        | 250V            |

- (1) Refer to RETS158AX for LM158A military specifications and to RETS158X for LM158 military specifications.
- (2) For operating at high temperatures, the LM358/LM358A, LM2904 must be derated based on a +125°C maximum junction temperature and a thermal resistance of 120°C/W for MDIP, 182°C/W for Metal Can, 189°C/W for Small Outline package, and 230°C/W for micro SMD, which applies for the device soldered in a printed circuit board, operating in a still air ambient. The LM258/LM258A and LM158/LM158A can be derated based on a +150°C maximum junction temperature. The dissipation is the total of both amplifiers—use external resistors, where possible, to allow the amplifier to saturate or to reduce the power which is dissipated in the integrated circuit.
- (3) Short circuits from the output to  $V^+$  can cause excessive heating and eventual destruction. When considering short circuits to ground, the maximum output current is approximately 40 mA independent of the magnitude of  $V^+$ . At values of supply voltage in excess of +15V, continuous short-circuits can exceed the power dissipation ratings and cause eventual destruction. Destructive dissipation can result from simultaneous shorts on all amplifiers.
- (4) This input current will only exist when the voltage at any of the input leads is driven negative. It is due to the collector-base junction of the input PNP transistors becoming forward biased and thereby acting as input diode clamps. In addition to this diode action, there is also lateral NPN parasitic transistor action on the IC chip. This transistor action can cause the output voltages of the op amps to go to the  $V^+$  voltage level (or to ground for a large overdrive) for the time duration that an input is driven negative. This is not destructive and normal output states will re-establish when the input voltage, which was negative, again returns to a value greater than -0.3V (at 25°C).
- (5) Human body model, 1.5 k $\Omega$  in series with 100 pF.

## Electrical Characteristics

$V^+ = +5.0V$ , unless otherwise stated

| Parameter                       | Conditions                                                                          | LM158A |     |             | LM358A |     |             | LM158/LM258 |     |             | Units |
|---------------------------------|-------------------------------------------------------------------------------------|--------|-----|-------------|--------|-----|-------------|-------------|-----|-------------|-------|
|                                 |                                                                                     | Min    | Typ | Max         | Min    | Typ | Max         | Min         | Typ | Max         |       |
| Input Offset Voltage            | <sup>(1)</sup> , $T_A = 25^\circ C$                                                 |        | 1   | 2           |        | 2   | 3           |             | 2   | 5           | mV    |
| Input Bias Current              | $I_{IN(+)}$ or $I_{IN(-)}$ , $T_A = 25^\circ C$ ,<br>$V_{CM} = 0V$ , <sup>(2)</sup> |        | 20  | 50          |        | 45  | 100         |             | 45  | 150         | nA    |
| Input Offset Current            | $I_{IN(+)} - I_{IN(-)}$ , $V_{CM} = 0V$ , $T_A = 25^\circ C$                        |        | 2   | 10          |        | 5   | 30          |             | 3   | 30          | nA    |
| Input Common-Mode Voltage Range | $V^+ = 30V$ , <sup>(3)</sup>                                                        | 0      |     | $V^+ - 1.5$ | 0      |     | $V^+ - 1.5$ | 0           |     | $V^+ - 1.5$ | V     |
| Supply Current                  | Over Full Temperature Range                                                         |        |     |             |        |     |             |             |     |             |       |
|                                 | $R_L = \infty$ on All Op Amps                                                       |        |     |             |        |     |             |             |     |             |       |
|                                 | $V^+ = 30V$ (LM2904 $V^+ = 26V$ )                                                   |        | 1   | 2           |        | 1   | 2           |             | 1   | 2           | mA    |
|                                 | $V^+ = 5V$                                                                          |        | 0.5 | 1.2         |        | 0.5 | 1.2         |             | 0.5 | 1.2         | mA    |

- (1)  $V_O \approx 1.4V$ ,  $R_S = 0\Omega$  with  $V^+$  from 5V to 30V; and over the full input common-mode range (0V to  $V^+ - 1.5V$ ) at  $25^\circ C$ . For LM2904,  $V^+$  from 5V to 26V.
- (2) The direction of the input current is out of the IC due to the PNP input stage. This current is essentially constant, independent of the state of the output so no loading change exists on the input lines.
- (3) The input common-mode voltage of either input signal voltage should not be allowed to go negative by more than 0.3V (at  $25^\circ C$ ). The upper end of the common-mode voltage range is  $V^+ - 1.5V$  (at  $25^\circ C$ ), but either or both inputs can go to +32V without damage (+26V for LM2904), independent of the magnitude of  $V^+$ .

## Electrical Characteristics

$V^+ = +5.0V$ , unless otherwise stated

| Parameter                       | Conditions                                                                          | LM358 |     |             | LM2904 |     |             | Units |
|---------------------------------|-------------------------------------------------------------------------------------|-------|-----|-------------|--------|-----|-------------|-------|
|                                 |                                                                                     | Min   | Typ | Max         | Min    | Typ | Max         |       |
| Input Offset Voltage            | <sup>(1)</sup> , $T_A = 25^\circ C$                                                 |       | 2   | 7           |        | 2   | 7           | mV    |
| Input Bias Current              | $I_{IN(+)}$ or $I_{IN(-)}$ , $T_A = 25^\circ C$ ,<br>$V_{CM} = 0V$ , <sup>(2)</sup> |       | 45  | 250         |        | 45  | 250         | nA    |
| Input Offset Current            | $I_{IN(+)} - I_{IN(-)}$ , $V_{CM} = 0V$ , $T_A = 25^\circ C$                        |       | 5   | 50          |        | 5   | 50          | nA    |
| Input Common-Mode Voltage Range | $V^+ = 30V$ , <sup>(3)</sup><br>(LM2904, $V^+ = 26V$ ), $T_A = 25^\circ C$          | 0     |     | $V^+ - 1.5$ | 0      |     | $V^+ - 1.5$ | V     |
| Supply Current                  | Over Full Temperature Range                                                         |       |     |             |        |     |             |       |
|                                 | $R_L = \infty$ on All Op Amps                                                       |       |     |             |        |     |             |       |
|                                 | $V^+ = 30V$ (LM2904 $V^+ = 26V$ )                                                   |       | 1   | 2           |        | 1   | 2           | mA    |
|                                 | $V^+ = 5V$                                                                          |       | 0.5 | 1.2         |        | 0.5 | 1.2         | mA    |

- (1)  $V_O \approx 1.4V$ ,  $R_S = 0\Omega$  with  $V^+$  from 5V to 30V; and over the full input common-mode range (0V to  $V^+ - 1.5V$ ) at  $25^\circ C$ . For LM2904,  $V^+$  from 5V to 26V.
- (2) The direction of the input current is out of the IC due to the PNP input stage. This current is essentially constant, independent of the state of the output so no loading change exists on the input lines.
- (3) The input common-mode voltage of either input signal voltage should not be allowed to go negative by more than 0.3V (at  $25^\circ C$ ). The upper end of the common-mode voltage range is  $V^+ - 1.5V$  (at  $25^\circ C$ ), but either or both inputs can go to +32V without damage (+26V for LM2904), independent of the magnitude of  $V^+$ .

## Electrical Characteristics

$V^+ = +5.0V$ , <sup>(1)</sup>, unless otherwise stated

| Parameter                 | Conditions                                                                              | LM158A |     |     | LM358A |     |     | LM158/LM258 |     |     | Units |
|---------------------------|-----------------------------------------------------------------------------------------|--------|-----|-----|--------|-----|-----|-------------|-----|-----|-------|
|                           |                                                                                         | Min    | Typ | Max | Min    | Typ | Max | Min         | Typ | Max |       |
| Large Signal Voltage Gain | $V^+ = 15V$ , $T_A = 25^\circ C$ ,<br>$R_L \geq 2 k\Omega$ , (For $V_O = 1V$ to $11V$ ) | 50     | 100 |     | 25     | 100 |     | 50          | 100 |     | V/mV  |

- (1) These specifications are limited to  $-55^\circ C \leq T_A \leq +125^\circ C$  for the LM158/LM158A. With the LM258/LM258A, all temperature specifications are limited to  $-25^\circ C \leq T_A \leq +85^\circ C$ , the LM358/LM358A temperature specifications are limited to  $0^\circ C \leq T_A \leq +70^\circ C$ , and the LM2904 specifications are limited to  $-40^\circ C \leq T_A \leq +85^\circ C$ .

## Electrical Characteristics (continued)

 $V^+ = +5.0V$ , <sup>(1)</sup>, unless otherwise stated

| Parameter                       |                 |                                                                        | Conditions                                                                  |    | LM158A |      |                   | LM358A |      |                   | LM158/LM258 |      |                   | Units |
|---------------------------------|-----------------|------------------------------------------------------------------------|-----------------------------------------------------------------------------|----|--------|------|-------------------|--------|------|-------------------|-------------|------|-------------------|-------|
|                                 |                 |                                                                        |                                                                             |    | Min    | Typ  | Max               | Min    | Typ  | Max               | Min         | Typ  | Max               |       |
| Common-Mode                     |                 |                                                                        | T <sub>A</sub> = 25°C,                                                      |    | 70     | 85   |                   | 65     | 85   |                   | 70          | 85   |                   | dB    |
| Rejection Ratio                 |                 |                                                                        | V <sub>CM</sub> = 0V to V <sup>+</sup> –1.5V                                |    |        |      |                   |        |      |                   |             |      |                   |       |
| Power Supply                    |                 |                                                                        | V <sup>+</sup> = 5V to 30V                                                  |    | 65     | 100  |                   | 65     | 100  |                   | 65          | 100  |                   | dB    |
| Rejection Ratio                 |                 |                                                                        | (LM2904, V <sup>+</sup> = 5V to 26V), T <sub>A</sub> = 25°C                 |    |        |      |                   |        |      |                   |             |      |                   |       |
| Amplifier-to-Amplifier Coupling |                 |                                                                        | f = 1 kHz to 20 kHz, T <sub>A</sub> = 25°C (Input Referred), <sup>(2)</sup> |    |        | –120 |                   |        | –120 |                   |             | –120 |                   | dB    |
| Output Current                  | Source          | V <sub>IN</sub> <sup>+</sup> = 1V,                                     |                                                                             | 20 | 40     |      | 20                | 40     |      | 20                | 40          |      | mA                |       |
|                                 |                 | V <sub>IN</sub> <sup>–</sup> = 0V,                                     |                                                                             |    |        |      |                   |        |      |                   |             |      |                   |       |
|                                 |                 | V <sup>+</sup> = 15V,                                                  |                                                                             |    |        |      |                   |        |      |                   |             |      |                   |       |
|                                 |                 | V <sub>O</sub> = 2V, T <sub>A</sub> = 25°C                             |                                                                             |    |        |      |                   |        |      |                   |             |      |                   |       |
|                                 | Sink            | V <sub>IN</sub> <sup>–</sup> = 1V, V <sub>IN</sub> <sup>+</sup> = 0V   |                                                                             | 10 | 20     |      | 10                | 20     |      | 10                | 20          |      | mA                |       |
|                                 |                 | V <sup>+</sup> = 15V, T <sub>A</sub> = 25°C,                           |                                                                             |    |        |      |                   |        |      |                   |             |      |                   |       |
|                                 |                 | V <sub>O</sub> = 2V                                                    |                                                                             |    |        |      |                   |        |      |                   |             |      |                   |       |
|                                 |                 | V <sub>IN</sub> <sup>–</sup> = 1V,                                     |                                                                             | 12 | 50     |      | 12                | 50     |      | 12                | 50          |      | μA                |       |
|                                 |                 | V <sub>IN</sub> <sup>+</sup> = 0V                                      |                                                                             |    |        |      |                   |        |      |                   |             |      |                   |       |
|                                 |                 | T <sub>A</sub> = 25°C, V <sub>O</sub> = 200 mV,                        |                                                                             |    |        |      |                   |        |      |                   |             |      |                   |       |
| V <sup>+</sup> = 15V            |                 |                                                                        |                                                                             |    |        |      |                   |        |      |                   |             |      |                   |       |
| Short Circuit to Ground         |                 |                                                                        | T <sub>A</sub> = 25°C, <sup>(3)</sup> , V <sup>+</sup> = 15V                |    |        | 40   | 60                |        | 40   | 60                |             | 40   | 60                | mA    |
| Input Offset Voltage            |                 |                                                                        | <sup>(4)</sup>                                                              |    |        |      | 4                 |        |      | 5                 |             |      | 7                 | mV    |
| Input Offset Voltage Drift      |                 |                                                                        | R <sub>S</sub> = 0Ω                                                         |    |        | 7    | 15                |        | 7    | 20                |             | 7    |                   | μV/°C |
| Input Offset Current            |                 |                                                                        | I <sub>IN(+)</sub> – I <sub>IN(–)</sub>                                     |    |        |      | 30                |        |      | 75                |             |      | 100               | nA    |
| Input Offset Current Drift      |                 |                                                                        | R <sub>S</sub> = 0Ω                                                         |    |        | 10   | 200               |        | 10   | 300               |             | 10   |                   | pA/°C |
| Input Bias Current              |                 |                                                                        | I <sub>IN(+)</sub> or I <sub>IN(–)</sub>                                    |    |        | 40   | 100               |        | 40   | 200               |             | 40   | 300               | nA    |
| Input Common-Mode Voltage Range |                 |                                                                        | V <sup>+</sup> = 30 V, <sup>(5)</sup> (LM2904, V <sup>+</sup> = 26V)        |    | 0      |      | V <sup>+</sup> –2 | 0      |      | V <sup>+</sup> –2 | 0           |      | V <sup>+</sup> –2 | V     |
| Large Signal Voltage Gain       |                 |                                                                        | V <sup>+</sup> = +15V                                                       |    | 25     |      |                   | 15     |      |                   | 25          |      |                   | V/mV  |
|                                 |                 |                                                                        | (V <sub>O</sub> = 1V to 11V)                                                |    |        |      |                   |        |      |                   |             |      |                   |       |
|                                 |                 |                                                                        | R <sub>L</sub> ≥ 2 kΩ                                                       |    |        |      |                   |        |      |                   |             |      |                   |       |
| Output                          | V <sub>OH</sub> | V <sup>+</sup> = +30V                                                  |                                                                             | 26 |        |      | 26                |        |      | 26                |             |      | V                 |       |
| Voltage                         |                 | (LM2904, V <sup>+</sup> = 26V)                                         |                                                                             | 27 | 28     |      | 27                | 28     |      | 27                | 28          |      | V                 |       |
| Swing                           | V <sub>OL</sub> | V <sup>+</sup> = 5V, R <sub>L</sub> = 10 kΩ                            |                                                                             |    |        | 5    | 20                |        | 5    | 20                |             | 5    | 20                | mV    |
| Output Current                  | Source          | V <sub>IN</sub> <sup>+</sup> = +1V, V <sub>IN</sub> <sup>–</sup> = 0V, |                                                                             | 10 | 20     |      | 10                | 20     |      | 10                | 20          |      | mA                |       |
|                                 |                 | V <sup>+</sup> = 15V, V <sub>O</sub> = 2V                              |                                                                             |    |        |      |                   |        |      |                   |             |      |                   |       |
|                                 | Sink            | V <sub>IN</sub> <sup>–</sup> = +1V, V <sub>IN</sub> <sup>+</sup> = 0V, |                                                                             | 10 | 15     |      | 5                 | 8      |      | 5                 | 8           |      | mA                |       |
|                                 |                 | V <sup>+</sup> = 15V, V <sub>O</sub> = 2V                              |                                                                             |    |        |      |                   |        |      |                   |             |      |                   |       |

- (2) Due to proximity of external components, insure that coupling is not originating via stray capacitance between these external parts. This typically can be detected as this type of capacitance increases at higher frequencies.
- (3) Short circuits from the output to  $V^+$  can cause excessive heating and eventual destruction. When considering short circuits to ground, the maximum output current is approximately 40 mA independent of the magnitude of  $V^+$ . At values of supply voltage in excess of +15V, continuous short-circuits can exceed the power dissipation ratings and cause eventual destruction. Destructive dissipation can result from simultaneous shorts on all amplifiers.
- (4)  $V_O \approx 1.4V$ ,  $R_S = 0\Omega$  with  $V^+$  from 5V to 30V; and over the full input common-mode range (0V to  $V^+ - 1.5V$ ) at  $25^\circ C$ . For LM2904,  $V^+$  from 5V to 26V.
- (5) The input common-mode voltage of either input signal voltage should not be allowed to go negative by more than 0.3V (at  $25^\circ C$ ). The upper end of the common-mode voltage range is  $V^+ - 1.5V$  (at  $25^\circ C$ ), but either or both inputs can go to +32V without damage (+26V for LM2904), independent of the magnitude of  $V^+$ .

## Electrical Characteristics

$V^+ = +5.0V$ , <sup>(1)</sup>, unless otherwise stated

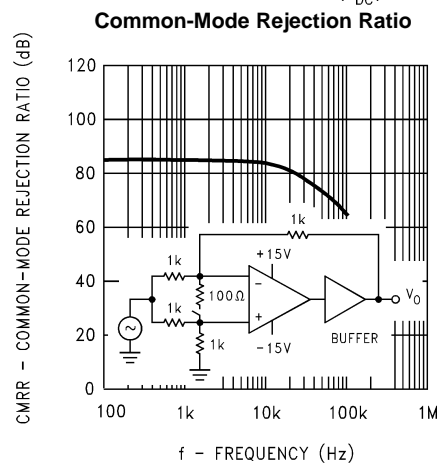
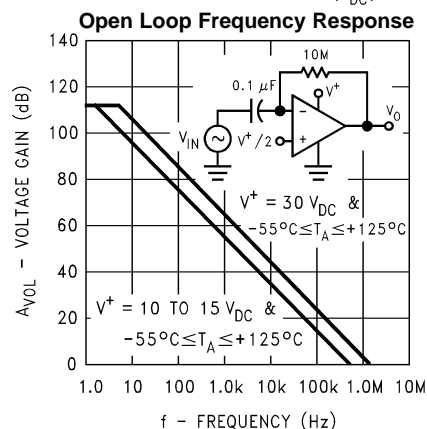
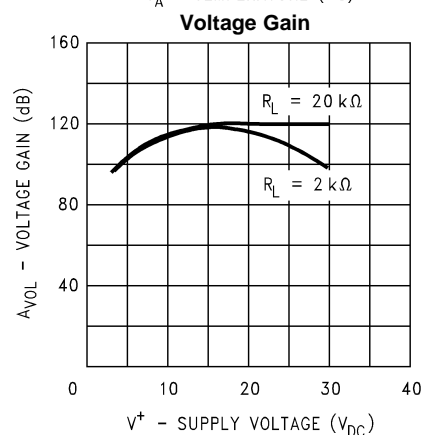
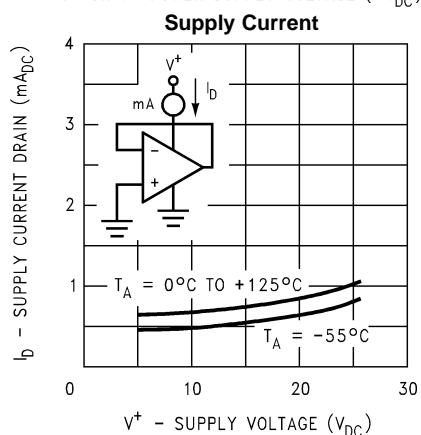
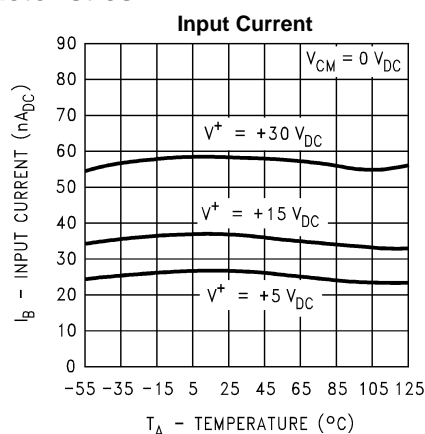
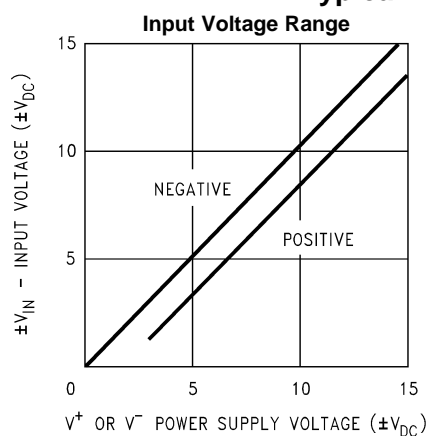
| Parameter                       |                 |                                                                      | Conditions                                                                  | LM358 |     |     | LM2904 |                   |      | Units |                   |       |
|---------------------------------|-----------------|----------------------------------------------------------------------|-----------------------------------------------------------------------------|-------|-----|-----|--------|-------------------|------|-------|-------------------|-------|
|                                 |                 |                                                                      |                                                                             | Min   | Typ | Max | Min    | Typ               | Max  |       |                   |       |
| Large Signal Voltage            |                 |                                                                      | V <sup>+</sup> = 15V, T <sub>A</sub> = 25°C,                                |       |     |     |        |                   |      |       |                   |       |
| Gain                            |                 |                                                                      | R <sub>L</sub> ≥ 2 kΩ, (For V <sub>O</sub> = 1V to 11V)                     |       |     | 25  | 100    |                   | 25   | 100   | V/mV              |       |
| Common-Mode Rejection Ratio     |                 |                                                                      | T <sub>A</sub> = 25°C,                                                      |       |     | 65  | 85     |                   | 50   | 70    | dB                |       |
|                                 |                 |                                                                      | V <sub>CM</sub> = 0V to V <sup>+</sup> –1.5V                                |       |     |     |        |                   |      |       |                   |       |
| Power Supply Rejection Ratio    |                 |                                                                      | V <sup>+</sup> = 5V to 30V                                                  |       |     | 65  | 100    |                   | 50   | 100   | dB                |       |
|                                 |                 |                                                                      | (LM2904, V <sup>+</sup> = 5V to 26V), T <sub>A</sub> = 25°C                 |       |     |     |        |                   |      |       |                   |       |
| Amplifier-to-Amplifier Coupling |                 |                                                                      | f = 1 kHz to 20 kHz, T <sub>A</sub> = 25°C (Input Referred), <sup>(2)</sup> |       |     |     | –120   |                   | –120 |       | dB                |       |
| Output Current                  | Source          | V <sub>IN</sub> <sup>+</sup> = 1V,                                   |                                                                             | 20    | 40  |     | 20     | 40                |      | mA    |                   |       |
|                                 |                 | V <sub>IN</sub> <sup>–</sup> = 0V,                                   |                                                                             |       |     |     |        |                   |      |       |                   |       |
|                                 |                 | V <sup>+</sup> = 15V,                                                |                                                                             |       |     |     |        |                   |      |       |                   |       |
|                                 |                 | V <sub>O</sub> = 2V, T <sub>A</sub> = 25°C                           |                                                                             |       |     |     |        |                   |      |       |                   |       |
|                                 | Sink            | V <sub>IN</sub> <sup>–</sup> = 1V, V <sub>IN</sub> <sup>+</sup> = 0V |                                                                             | 10    | 20  |     | 10     | 20                |      | mA    |                   |       |
|                                 |                 | V <sup>+</sup> = 15V, T <sub>A</sub> = 25°C,                         |                                                                             |       |     |     |        |                   |      |       |                   |       |
|                                 |                 | V <sub>O</sub> = 2V                                                  |                                                                             |       |     |     |        |                   |      |       |                   |       |
|                                 |                 |                                                                      | V <sub>IN</sub> <sup>–</sup> = 1V,                                          |       | 12  | 50  |        | 12                | 50   |       | μA                |       |
|                                 |                 |                                                                      | V <sub>IN</sub> <sup>+</sup> = 0V                                           |       |     |     |        |                   |      |       |                   |       |
|                                 |                 |                                                                      | T <sub>A</sub> = 25°C, V <sub>O</sub> = 200 mV,                             |       |     |     |        |                   |      |       |                   |       |
| V <sup>+</sup> = 15V            |                 |                                                                      |                                                                             |       |     |     |        |                   |      |       |                   |       |
| Short Circuit to Ground         |                 |                                                                      | T <sub>A</sub> = 25°C, <sup>(3)</sup> , V <sup>+</sup> = 15V                |       |     |     | 40     | 60                |      | 40    | 60                | mA    |
| Input Offset Voltage            |                 |                                                                      | <sup>(4)</sup>                                                              |       |     |     |        | 9                 |      |       | 10                | mV    |
| Input Offset Voltage Drift      |                 |                                                                      | R <sub>S</sub> = 0Ω                                                         |       |     |     | 7      |                   |      | 7     |                   | μV/°C |
| Input Offset Current            |                 |                                                                      | I <sub>IN(+)</sub> – I <sub>IN(–)</sub>                                     |       |     |     |        | 150               |      | 45    | 200               | nA    |
| Input Offset Current Drift      |                 |                                                                      | R <sub>S</sub> = 0Ω                                                         |       |     |     | 10     |                   |      | 10    |                   | pA/°C |
| Input Bias Current              |                 |                                                                      | I <sub>IN(+)</sub> or I <sub>IN(–)</sub>                                    |       |     |     | 40     | 500               |      | 40    | 500               | nA    |
| Input Common-Mode Voltage Range |                 |                                                                      | V <sup>+</sup> = 30 V, <sup>(5)</sup> (LM2904, V <sup>+</sup> = 26V)        |       |     | 0   |        | V <sup>+</sup> –2 | 0    |       | V <sup>+</sup> –2 | V     |
| Large Signal Voltage Gain       |                 |                                                                      | V <sup>+</sup> = +15V                                                       |       |     | 15  |        |                   | 15   |       |                   | V/mV  |
|                                 |                 |                                                                      | (V <sub>O</sub> = 1V to 11V)                                                |       |     |     |        |                   |      |       |                   |       |
|                                 |                 |                                                                      | R <sub>L</sub> ≥ 2 kΩ                                                       |       |     |     |        |                   |      |       |                   |       |
| Output                          | V <sub>OH</sub> | V <sup>+</sup> = +30V                                                | R <sub>L</sub> = 2 kΩ                                                       | 26    |     |     | 22     |                   |      |       | V                 |       |
| Voltage                         |                 | (LM2904, V <sup>+</sup> = 26V)                                       | R <sub>L</sub> = 10 kΩ                                                      | 27    | 28  |     | 23     | 24                |      | V     |                   |       |
| Swing                           | V <sub>OL</sub> | V <sup>+</sup> = 5V, R <sub>L</sub> = 10 kΩ                          |                                                                             |       |     | 5   | 20     |                   | 5    | 100   | mV                |       |

- (1) These specifications are limited to  $-55^\circ C \leq T_A \leq +125^\circ C$  for the LM158/LM158A. With the LM258/LM258A, all temperature specifications are limited to  $-25^\circ C \leq T_A \leq +85^\circ C$ , the LM358/LM358A temperature specifications are limited to  $0^\circ C \leq T_A \leq +70^\circ C$ , and the LM2904 specifications are limited to  $-40^\circ C \leq T_A \leq +85^\circ C$ .
- (2) Due to proximity of external components, insure that coupling is not originating via stray capacitance between these external parts. This typically can be detected as this type of capacitance increases at higher frequencies.
- (3) Short circuits from the output to  $V^+$  can cause excessive heating and eventual destruction. When considering short circuits to ground, the maximum output current is approximately 40 mA independent of the magnitude of  $V^+$ . At values of supply voltage in excess of +15V, continuous short-circuits can exceed the power dissipation ratings and cause eventual destruction. Destructive dissipation can result from simultaneous shorts on all amplifiers.
- (4)  $V_O = 1.4V$ ,  $R_S = 0\Omega$  with  $V^+$  from 5V to 30V; and over the full input common-mode range (0V to  $V^+ - 1.5V$ ) at  $25^\circ C$ . For LM2904,  $V^+$  from 5V to 26V.
- (5) The input common-mode voltage of either input signal voltage should not be allowed to go negative by more than 0.3V (at  $25^\circ C$ ). The upper end of the common-mode voltage range is  $V^+ - 1.5V$  (at  $25^\circ C$ ), but either or both inputs can go to +32V without damage (+26V for LM2904), independent of the magnitude of  $V^+$ .

**Electrical Characteristics (continued)**
 $V^+ = +5.0V$ , <sup>(1)</sup>, unless otherwise stated

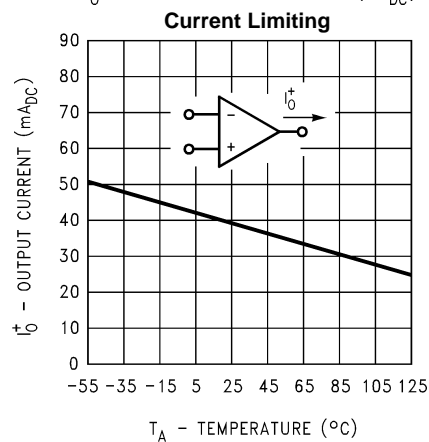
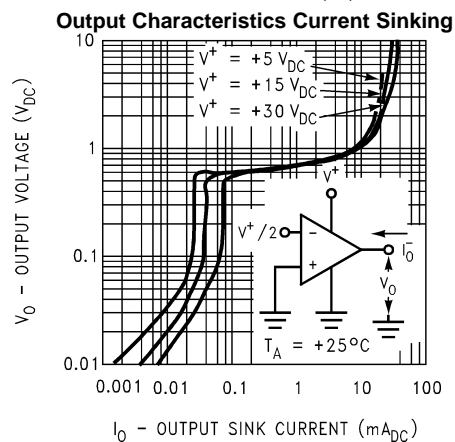
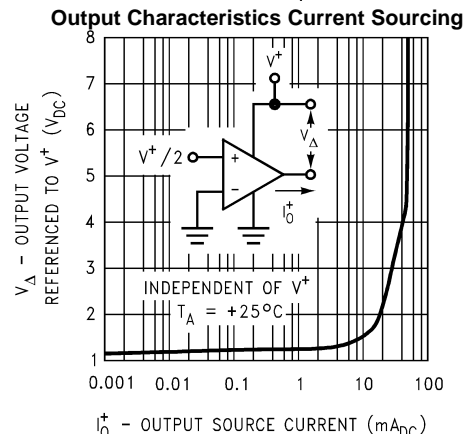
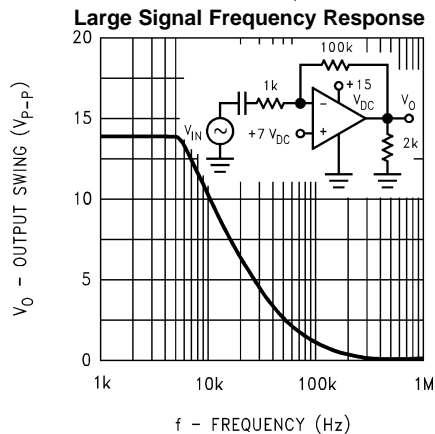
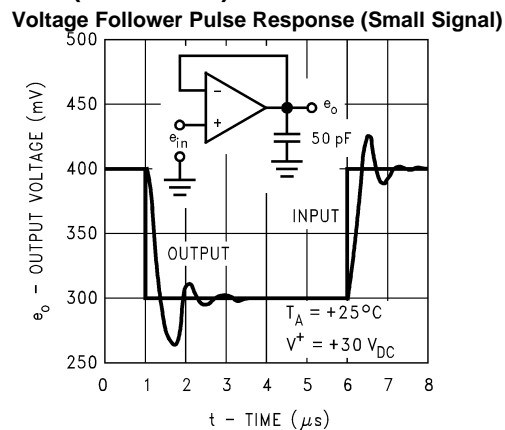
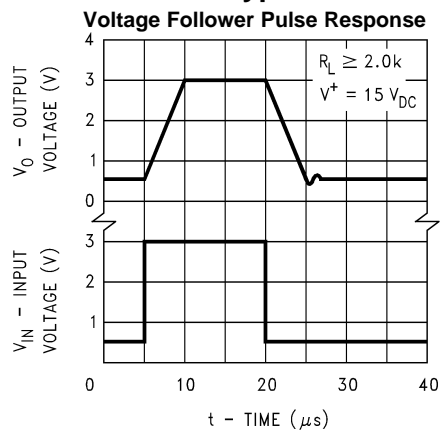
| Parameter      |        | Conditions                           | LM358 |     |     | LM2904 |     |     | Units |
|----------------|--------|--------------------------------------|-------|-----|-----|--------|-----|-----|-------|
|                |        |                                      | Min   | Typ | Max | Min    | Typ | Max |       |
| Output Current | Source | $V_{IN}^+ = +1V$ , $V_{IN}^- = 0V$ , | 10    | 20  |     | 10     | 20  |     | mA    |
|                |        | $V^+ = 15V$ , $V_O = 2V$             |       |     |     |        |     |     |       |
|                | Sink   | $V_{IN}^- = +1V$ , $V_{IN}^+ = 0V$ , | 5     | 8   |     | 5      | 8   |     | mA    |
|                |        | $V^+ = 15V$ , $V_O = 2V$             |       |     |     |        |     |     |       |

## Typical Performance Characteristics

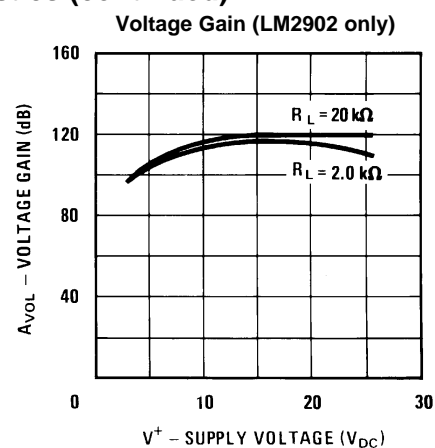
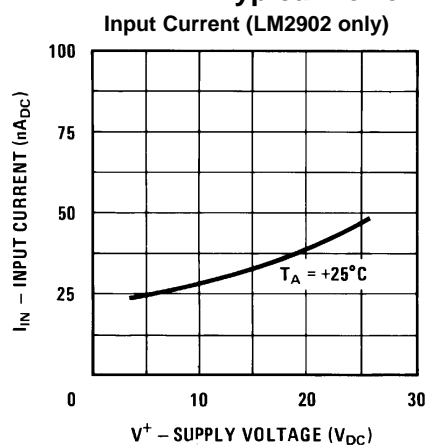




## Typical Performance Characteristics (continued)



### Typical Performance Characteristics (continued)



## APPLICATION HINTS

The LM158 series are op amps which operate with only a single power supply voltage, have true-differential inputs, and remain in the linear mode with an input common-mode voltage of 0  $V_{DC}$ . These amplifiers operate over a wide range of power supply voltage with little change in performance characteristics. At 25°C amplifier operation is possible down to a minimum supply voltage of 2.3  $V_{DC}$ .

Precautions should be taken to insure that the power supply for the integrated circuit never becomes reversed in polarity or that the unit is not inadvertently installed backwards in a test socket as an unlimited current surge through the resulting forward diode within the IC could cause fusing of the internal conductors and result in a destroyed unit.

Large differential input voltages can be easily accommodated and, as input differential voltage protection diodes are not needed, no large input currents result from large differential input voltages. The differential input voltage may be larger than  $V^+$  without damaging the device. Protection should be provided to prevent the input voltages from going negative more than  $-0.3 V_{DC}$  (at 25°C). An input clamp diode with a resistor to the IC input terminal can be used.

To reduce the power supply current drain, the amplifiers have a class A output stage for small signal levels which converts to class B in a large signal mode. This allows the amplifiers to both source and sink large output currents. Therefore both NPN and PNP external current boost transistors can be used to extend the power capability of the basic amplifiers. The output voltage needs to raise approximately 1 diode drop above ground to bias the on-chip vertical PNP transistor for output current sinking applications.

For ac applications, where the load is capacitively coupled to the output of the amplifier, a resistor should be used, from the output of the amplifier to ground to increase the class A bias current and prevent crossover distortion. Where the load is directly coupled, as in dc applications, there is no crossover distortion.

Capacitive loads which are applied directly to the output of the amplifier reduce the loop stability margin. Values of 50 pF can be accommodated using the worst-case non-inverting unity gain connection. Large closed loop gains or resistive isolation should be used if larger load capacitance must be driven by the amplifier.

The bias network of the LM158 establishes a drain current which is independent of the magnitude of the power supply voltage over the range of 3  $V_{DC}$  to 30  $V_{DC}$ .

Output short circuits either to ground or to the positive power supply should be of short time duration. Units can be destroyed, not as a result of the short circuit current causing metal fusing, but rather due to the large increase in IC chip dissipation which will cause eventual failure due to excessive junction temperatures. Putting direct short-circuits on more than one amplifier at a time will increase the total IC power dissipation to destructive levels, if not properly protected with external dissipation limiting resistors in series with the output leads of the amplifiers. The larger value of output source current which is available at 25°C provides a larger output current capability at elevated temperatures (see [Typical Performance Characteristics](#)) than a standard IC op amp.

The circuits presented in the [Typical Single-Supply Applications](#) emphasize operation on only a single power supply voltage. If complementary power supplies are available, all of the standard op amp circuits can be used. In general, introducing a pseudo-ground (a bias voltage reference of  $V^+/2$ ) will allow operation above and below this value in single power supply systems. Many application circuits are shown which take advantage of the wide input common-mode voltage range which includes ground. In most cases, input biasing is not required and input voltages which range to ground can easily be accommodated.

## CONNECTION DIAGRAM

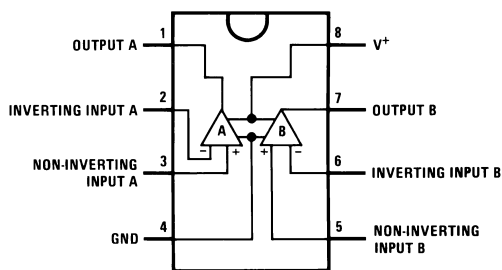


Figure 1. Top View - DIP/SO Package

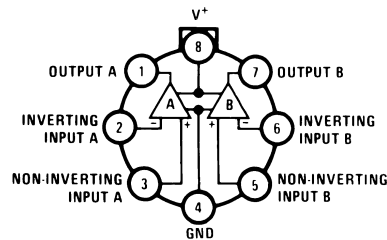


Figure 2. Top View - Metal Can Package

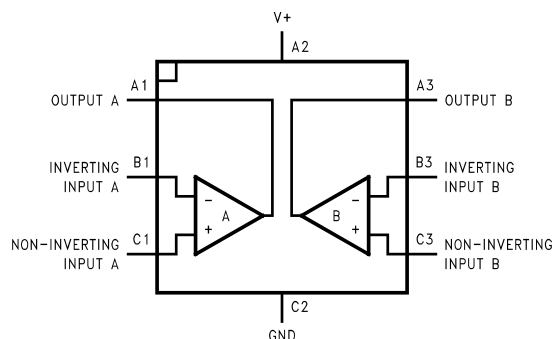


Figure 3. 8-Bump micro SMD - Top View (Bump Side Down)

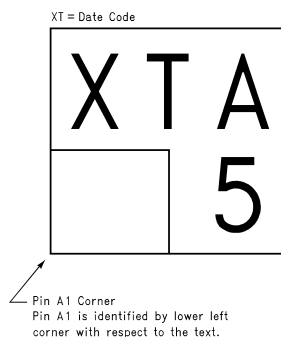


Figure 4. Top View - LM358BP micro SMD Marking Orientation

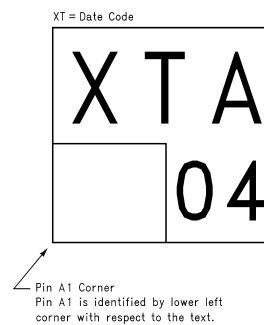


Figure 5. Top View - LM2904BP micro SMD Marking Orientation

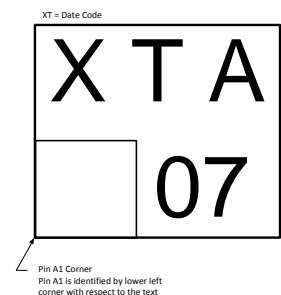


Figure 6. Top View - LM358TP micro SMD Marking Orientation

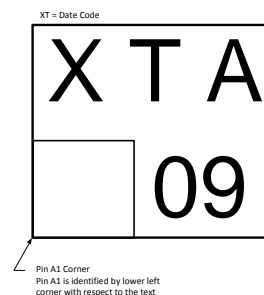
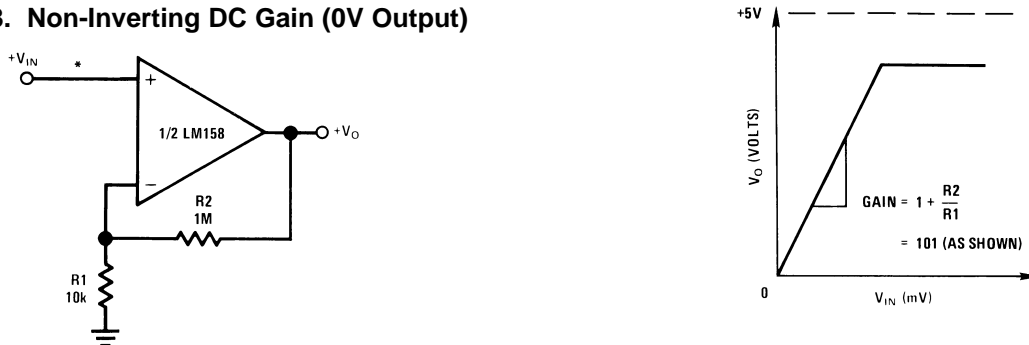


Figure 7. Top View - LM2904TP micro SMD Marking Orientation

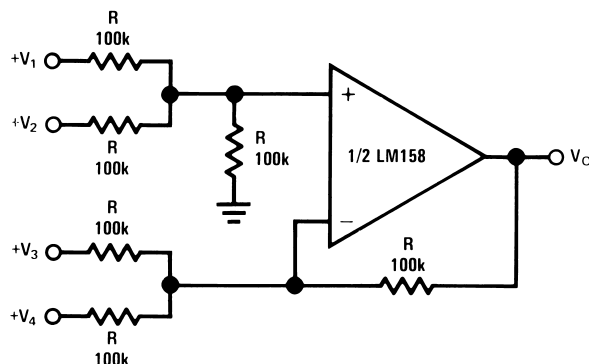
## TYPICAL SINGLE-SUPPLY APPLICATIONS

( $V^+ = 5.0 V_{DC}$ )

**Figure 8. Non-Inverting DC Gain (0V Output)**

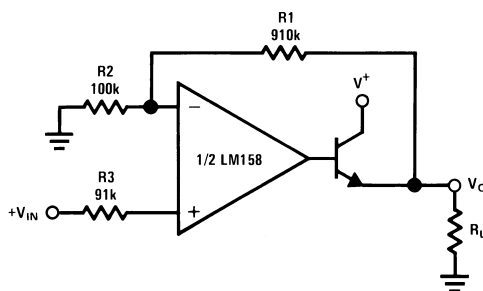


\*R not needed due to temperature independent  $I_{IN}$



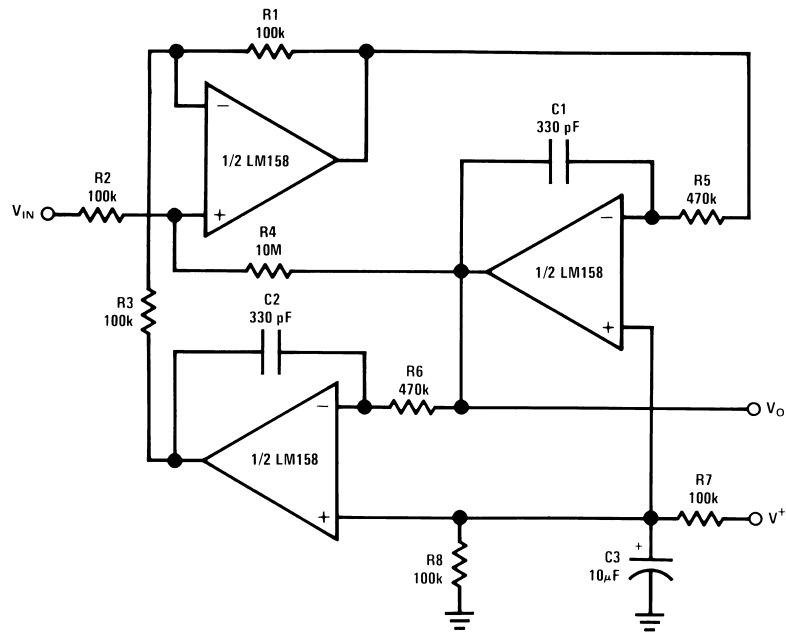
Where:  $V_O = V_1 + V_2 - V_3 - V_4$   
 $(V_1 + V_2) \geq (V_3 + V_4)$  to keep  $V_O > 0 V_{DC}$

**Figure 9. DC Summing Amplifier**  
 $(V_{IN}'S \geq 0 V_{DC} \text{ and } V_O \geq 0 V_{DC})$



$V_O = 0 V_{DC}$  for  $V_{IN} = 0 V_{DC}$   
 $A_V = 10$

**Figure 10. Power Amplifier**



$f_o = 1 \text{ kHz}$   
 $Q = 50$   
 $A_v = 100 \text{ (40 dB)}$

Figure 11. "BI-QUAD" RC Active Bandpass Filter

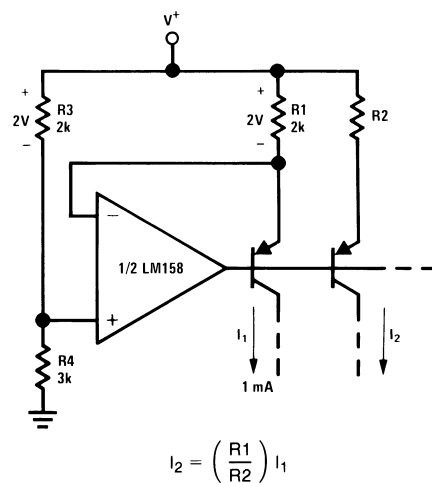


Figure 12. Fixed Current Sources

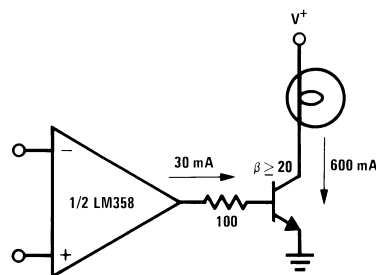
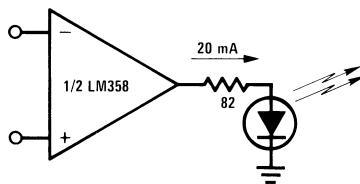
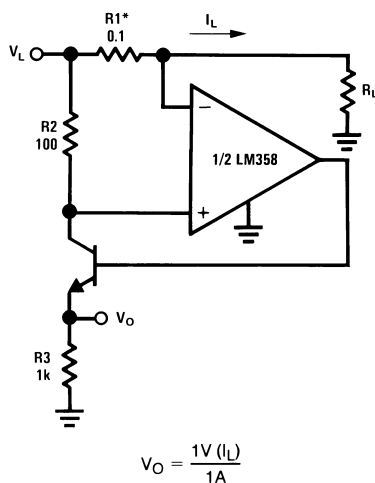


Figure 13. Lamp Driver

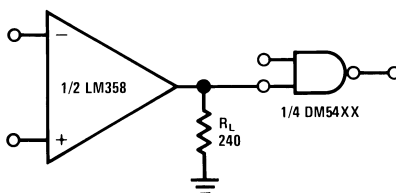


**Figure 14. LED Driver**

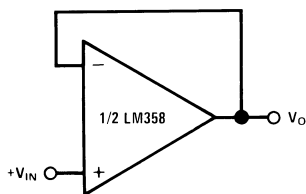


\*(Increase R1 for  $I_L$  small)  
 $V_L \leq V^+ - 2V$

**Figure 15. Current Monitor**



**Figure 16. Driving TTL**



$$V_O = V_{IN}$$

**Figure 17. Voltage Follower**

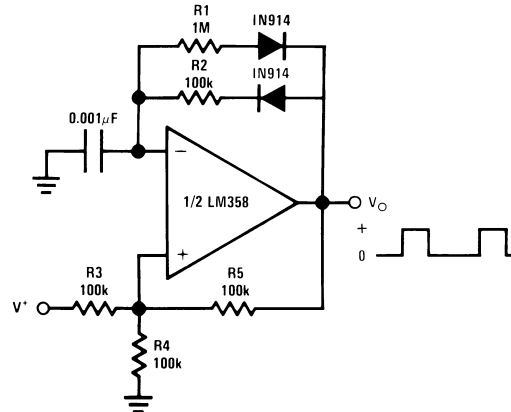


Figure 18. Pulse Generator

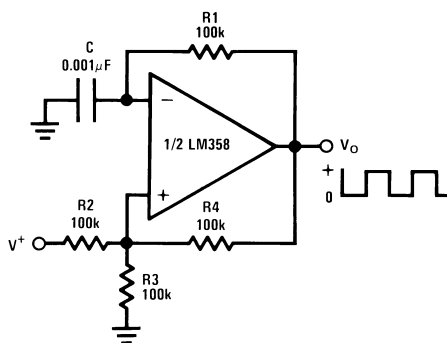


Figure 19. Squarewave Oscillator

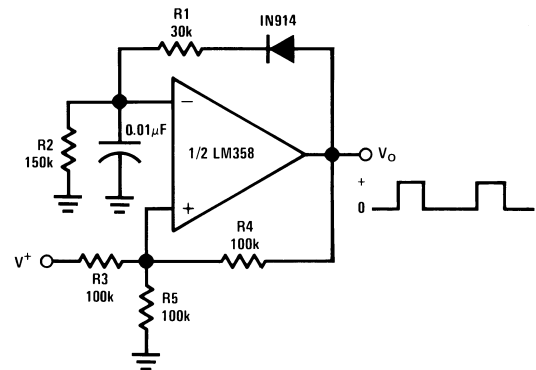


Figure 20. Pulse Generator

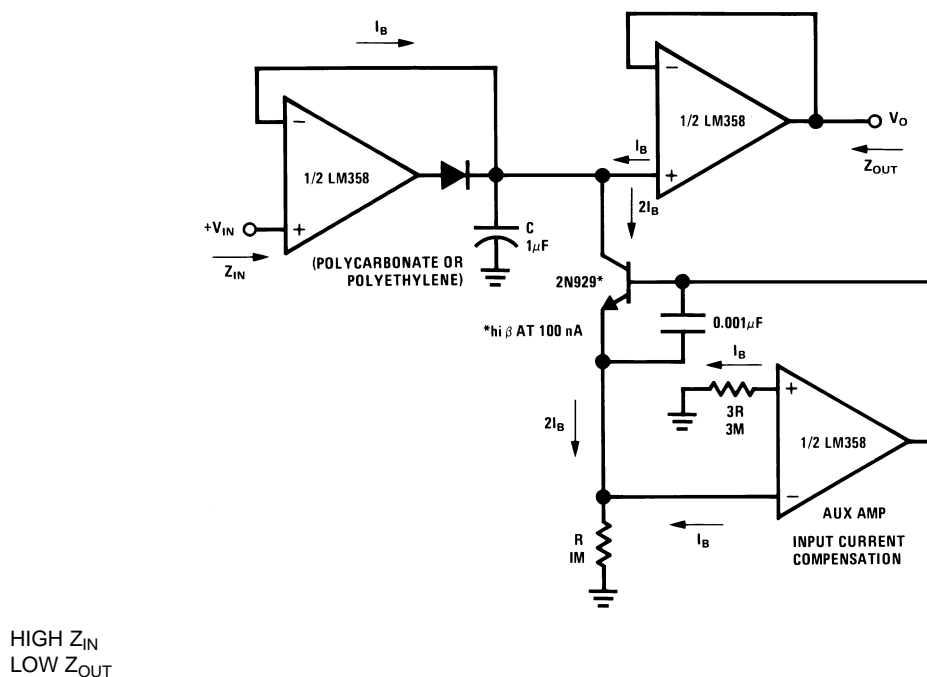
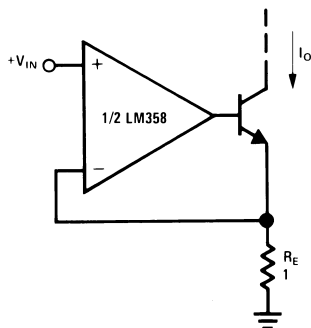


Figure 21. Low Drift Peak Detector





$I_O = 1 \text{ amp/volt } V_{IN}$   
(Increase  $R_E$  for  $I_O$  small)

Figure 22. High Compliance Current Sink

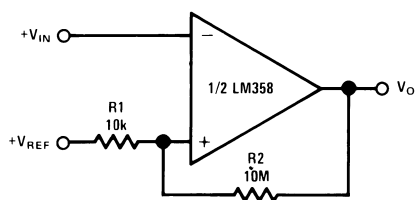
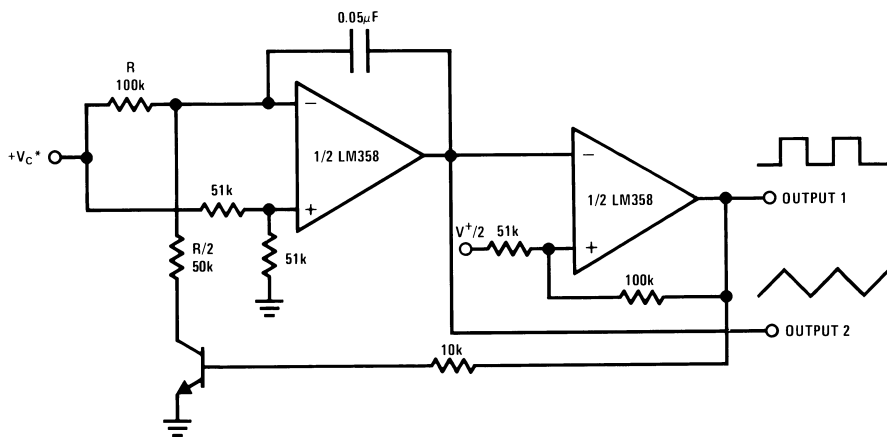


Figure 23. Comparator with Hysteresis



\*WIDE CONTROL VOLTAGE RANGE:  $0 V_{DC} \leq V_C \leq 2 (V^+ - 1.5 V_{DC})$

Figure 24. Voltage Controlled Oscillator (VCO)

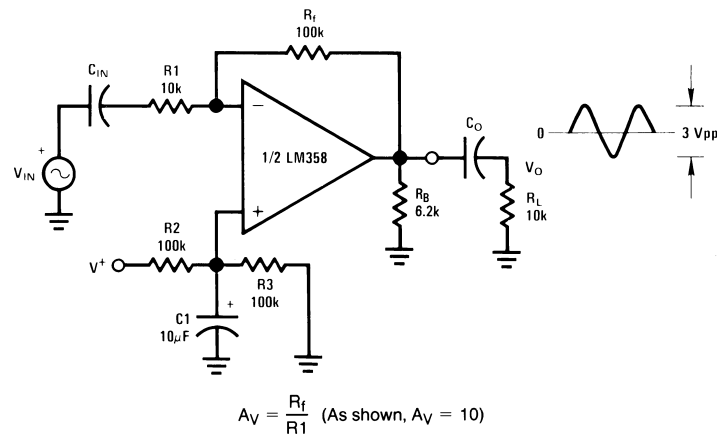


Figure 25. AC Coupled Inverting Amplifier

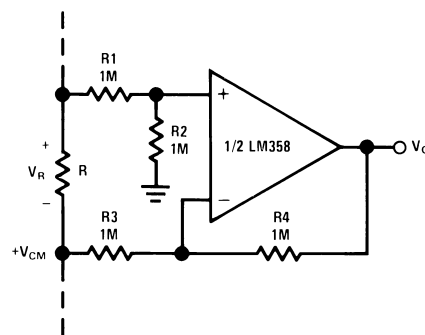
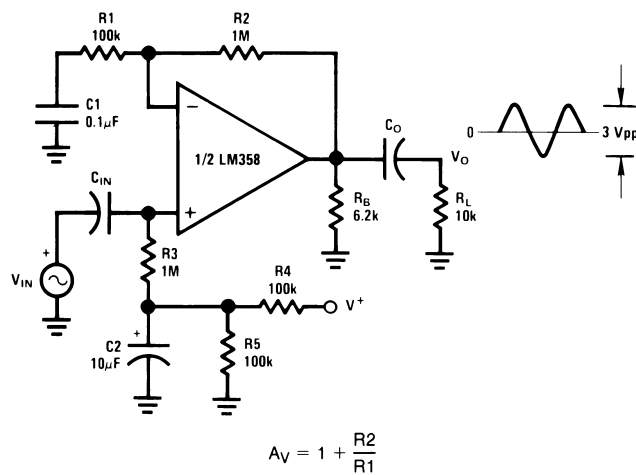
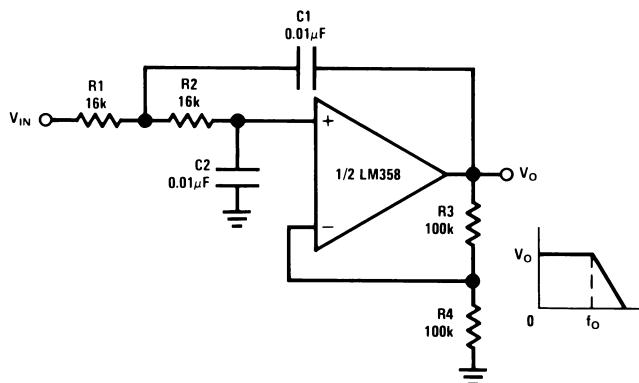


Figure 26. Ground Referencing a Differential Input Signal



$A_V = 11$  (As Shown)

Figure 27. AC Coupled Non-Inverting Amplifier

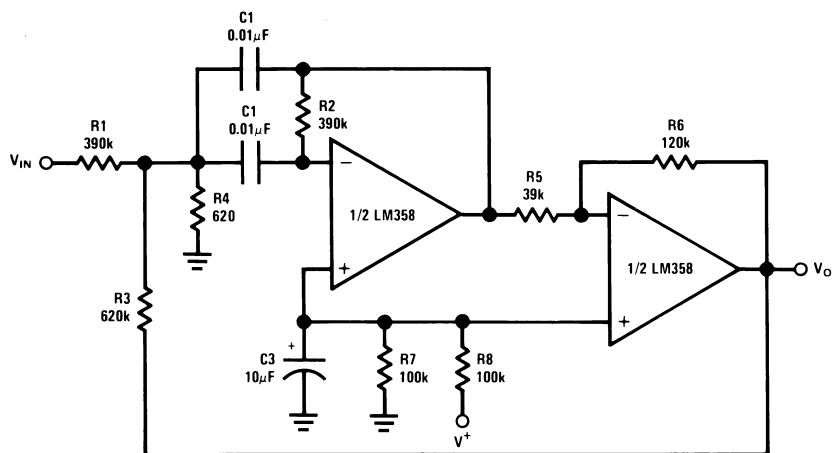


$$f_o = 1 \text{ kHz}$$

$$Q = 1$$

$$A_V = 2$$

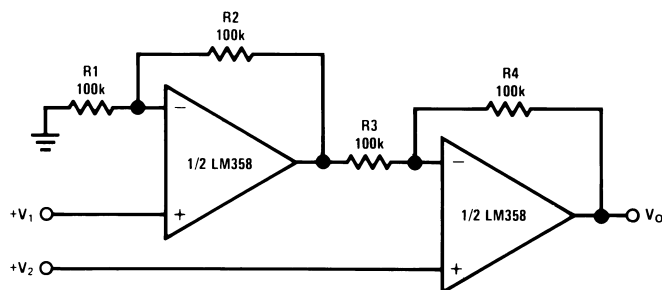
Figure 28. DC Coupled Low-Pass RC Active Filter



$$f_o = 1 \text{ kHz}$$

$$Q = 25$$

Figure 29. Bandpass Active Filter



$$\text{For } \frac{R1}{R2} = \frac{R4}{R3} \text{ (CMRR depends on this resistor ratio match)}$$

$$V_O = 1 + \frac{R4}{R3} (V_2 - V_1)$$

$$\text{As Shown: } V_O = 2 (V_2 - V_1)$$

Figure 30. High Input Z, DC Differential Amplifier

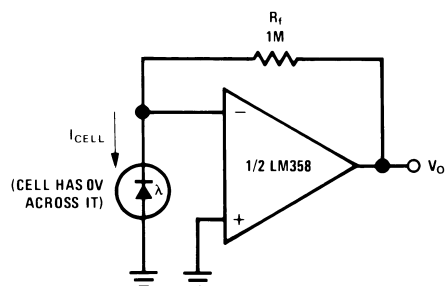
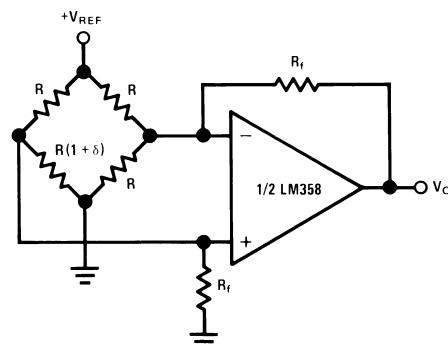


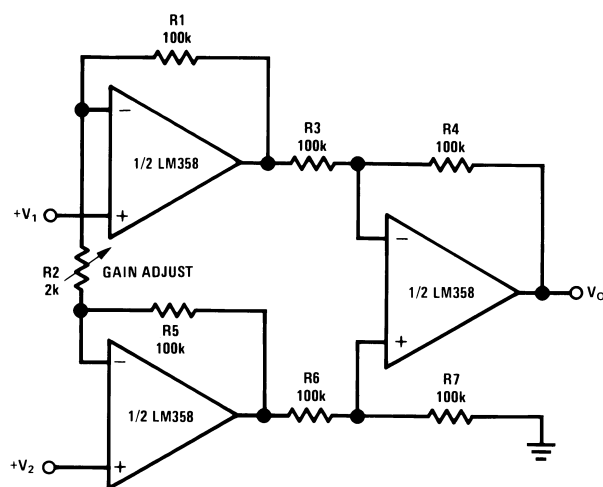
Figure 31. Photo Voltaic-Cell Amplifier



For  $\delta \ll 1$  and  $R_f \gg R$

$$V_O \cong V_{REF} \left( \frac{\delta}{2} \right) \frac{R_f}{R}$$

Figure 32. Bridge Current Amplifier

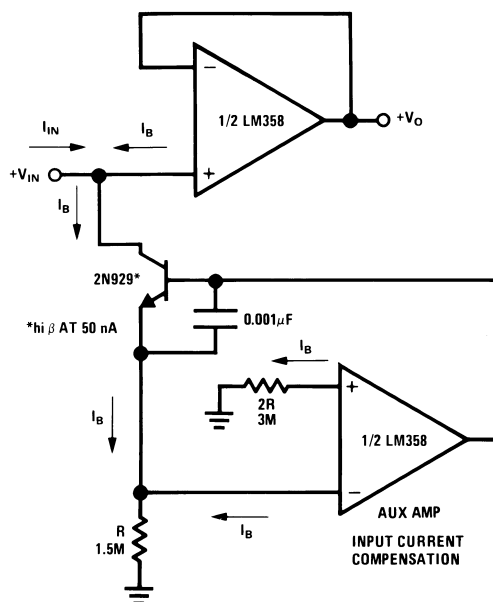


If  $R_1 = R_5$  &  $R_3 = R_4 = R_6 = R_7$  (CMRR depends on match)

$$V_O = 1 + \frac{2R_1}{R_2} (V_2 - V_1)$$

As shown  $V_O = 101 (V_2 - V_1)$

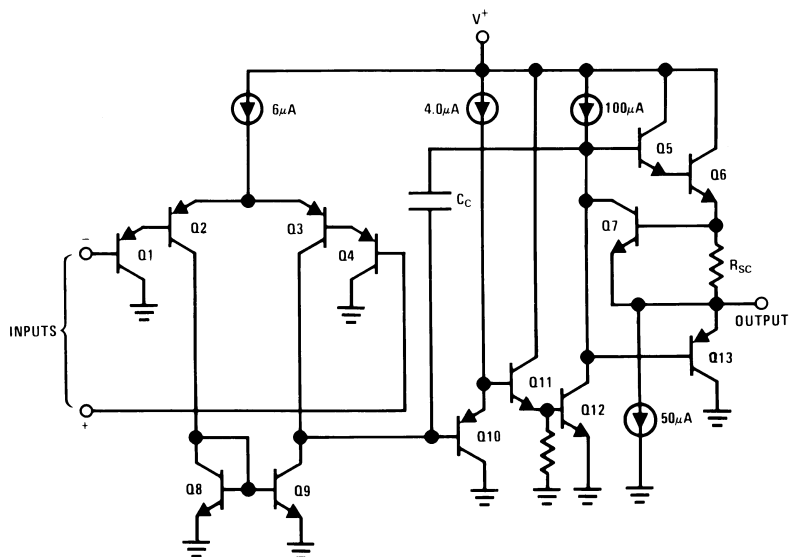
Figure 33. High Input Z Adjustable-Gain DC Instrumentation Amplifier



**Figure 34. Using Symmetrical Amplifiers to Reduce Input Current (General Concept)**

## SCHEMATIC DIAGRAM

(Each Amplifier)



**PACKAGING INFORMATION**

| Orderable Device | Status<br>(1) | Package Type | Package<br>Drawing | Pins | Package Qty | Eco Plan<br>(2)            | Lead/Ball Finish | MSL Peak Temp<br>(3) | Samples<br>(Requires Login) |
|------------------|---------------|--------------|--------------------|------|-------------|----------------------------|------------------|----------------------|-----------------------------|
| LM158AH          | ACTIVE        | TO-99        | LMC                | 8    | 500         | TBD                        | POST-PLATE       | Level-1-NA-UNLIM     |                             |
| LM158AH/NOPB     | ACTIVE        | TO-99        | LMC                | 8    | 500         | Green (RoHS<br>& no Sb/Br) | POST-PLATE       | Level-1-NA-UNLIM     |                             |
| LM158H           | ACTIVE        | TO-99        | LMC                | 8    | 500         | TBD                        | POST-PLATE       | Level-1-NA-UNLIM     |                             |
| LM158H/NOPB      | ACTIVE        | TO-99        | LMC                | 8    | 500         | Green (RoHS<br>& no Sb/Br) | POST-PLATE       | Level-1-NA-UNLIM     |                             |
| LM158J           | ACTIVE        | CDIP         | NAB                | 8    | 40          | TBD                        | A42 SNPB         | Level-1-NA-UNLIM     |                             |
| LM258H           | ACTIVE        | TO-99        | LMC                | 8    | 500         | TBD                        | POST-PLATE       | Level-1-NA-UNLIM     |                             |
| LM258H/NOPB      | ACTIVE        | TO-99        | LMC                | 8    | 500         | Green (RoHS<br>& no Sb/Br) | POST-PLATE       | Level-1-NA-UNLIM     |                             |
| LM2904ITP/NOPB   | ACTIVE        | DSBGA        | YPB                | 8    | 250         | Green (RoHS<br>& no Sb/Br) | SNAGCU           | Level-1-260C-UNLIM   |                             |
| LM2904ITPX/NOPB  | ACTIVE        | DSBGA        | YPB                | 8    | 3000        | Green (RoHS<br>& no Sb/Br) | SNAGCU           | Level-1-260C-UNLIM   |                             |
| LM2904M          | ACTIVE        | SOIC         | D                  | 8    | 95          | TBD                        | CU SNPB          | Level-1-235C-UNLIM   |                             |
| LM2904M/NOPB     | ACTIVE        | SOIC         | D                  | 8    | 95          | Green (RoHS<br>& no Sb/Br) | CU SN            | Level-1-260C-UNLIM   |                             |
| LM2904MX         | ACTIVE        | SOIC         | D                  | 8    | 2500        | TBD                        | CU SNPB          | Level-1-235C-UNLIM   |                             |
| LM2904MX/NOPB    | ACTIVE        | SOIC         | D                  | 8    | 2500        | Green (RoHS<br>& no Sb/Br) | CU SN            | Level-1-260C-UNLIM   |                             |
| LM2904N          | ACTIVE        | PDIP         | P                  | 8    | 40          | TBD                        | Call TI          | Level-1-NA-UNLIM     |                             |
| LM2904N/NOPB     | ACTIVE        | PDIP         | P                  | 8    | 40          | Green (RoHS<br>& no Sb/Br) | Call TI          | Level-1-NA-UNLIM     |                             |
| LM358AM          | ACTIVE        | SOIC         | D                  | 8    | 95          | TBD                        | CU SNPB          | Level-1-235C-UNLIM   |                             |
| LM358AM/NOPB     | ACTIVE        | SOIC         | D                  | 8    | 95          | Green (RoHS<br>& no Sb/Br) | CU SN            | Level-1-260C-UNLIM   |                             |
| LM358AMX         | ACTIVE        | SOIC         | D                  | 8    | 2500        | TBD                        | CU SNPB          | Level-1-235C-UNLIM   |                             |
| LM358AMX/NOPB    | ACTIVE        | SOIC         | D                  | 8    | 2500        | Green (RoHS<br>& no Sb/Br) | CU SN            | Level-1-260C-UNLIM   |                             |
| LM358AN          | ACTIVE        | PDIP         | P                  | 8    | 40          | TBD                        | Call TI          | Level-1-NA-UNLIM     |                             |
| LM358AN/NOPB     | ACTIVE        | PDIP         | P                  | 8    | 40          | Green (RoHS<br>& no Sb/Br) | Call TI          | Level-1-NA-UNLIM     |                             |
| LM358H           | ACTIVE        | TO-99        | LMC                | 8    | 500         | TBD                        | POST-PLATE       | Level-1-NA-UNLIM     |                             |

| Orderable Device | Status<br>(1) | Package Type | Package<br>Drawing | Pins | Package Qty | Eco Plan<br>(2)            | Lead/Ball Finish | MSL Peak Temp<br>(3) | Samples<br>(Requires Login) |
|------------------|---------------|--------------|--------------------|------|-------------|----------------------------|------------------|----------------------|-----------------------------|
| LM358H/NOPB      | ACTIVE        | TO-99        | LMC                | 8    | 500         | Green (RoHS<br>& no Sb/Br) | POST-PLATE       | Level-1-NA-UNLIM     |                             |
| LM358M           | ACTIVE        | SOIC         | D                  | 8    | 95          | TBD                        | CU SNPB          | Level-1-235C-UNLIM   |                             |
| LM358M/NOPB      | ACTIVE        | SOIC         | D                  | 8    | 95          | Green (RoHS<br>& no Sb/Br) | CU SN            | Level-1-260C-UNLIM   |                             |
| LM358MX          | ACTIVE        | SOIC         | D                  | 8    | 2500        | TBD                        | CU SNPB          | Level-1-235C-UNLIM   |                             |
| LM358MX/NOPB     | ACTIVE        | SOIC         | D                  | 8    | 2500        | Green (RoHS<br>& no Sb/Br) | CU SN            | Level-1-260C-UNLIM   |                             |
| LM358N           | ACTIVE        | PDIP         | P                  | 8    | 40          | TBD                        | Call TI          | Level-1-NA-UNLIM     |                             |
| LM358N/NOPB      | ACTIVE        | PDIP         | P                  | 8    | 40          | Green (RoHS<br>& no Sb/Br) | Call TI          | Level-1-NA-UNLIM     |                             |
| LM358TP/NOPB     | ACTIVE        | DSBGA        | YPB                | 8    | 250         | Green (RoHS<br>& no Sb/Br) | SNAGCU           | Level-1-260C-UNLIM   |                             |
| LM358TPX/NOPB    | ACTIVE        | DSBGA        | YPB                | 8    | 3000        | Green (RoHS<br>& no Sb/Br) | SNAGCU           | Level-1-260C-UNLIM   |                             |

(1) The marketing status values are defined as follows:

**ACTIVE:** Product device recommended for new designs.

**LIFEBUY:** TI has announced that the device will be discontinued, and a lifetime-buy period is in effect.

**NRND:** Not recommended for new designs. Device is in production to support existing customers, but TI does not recommend using this part in a new design.

**PREVIEW:** Device has been announced but is not in production. Samples may or may not be available.

**OBsolete:** TI has discontinued the production of the device.

(2) Eco Plan - The planned eco-friendly classification: Pb-Free (RoHS), Pb-Free (RoHS Exempt), or Green (RoHS & no Sb/Br) - please check <http://www.ti.com/productcontent> for the latest availability information and additional product content details.

**TBD:** The Pb-Free/Green conversion plan has not been defined.

**Pb-Free (RoHS):** TI's terms "Lead-Free" or "Pb-Free" mean semiconductor products that are compatible with the current RoHS requirements for all 6 substances, including the requirement that lead not exceed 0.1% by weight in homogeneous materials. Where designed to be soldered at high temperatures, TI Pb-Free products are suitable for use in specified lead-free processes.

**Pb-Free (RoHS Exempt):** This component has a RoHS exemption for either 1) lead-based flip-chip solder bumps used between the die and package, or 2) lead-based die adhesive used between the die and leadframe. The component is otherwise considered Pb-Free (RoHS compatible) as defined above.

**Green (RoHS & no Sb/Br):** TI defines "Green" to mean Pb-Free (RoHS compatible), and free of Bromine (Br) and Antimony (Sb) based flame retardants (Br or Sb do not exceed 0.1% by weight in homogeneous material)

(3) MSL, Peak Temp. -- The Moisture Sensitivity Level rating according to the JEDEC industry standard classifications, and peak solder temperature.

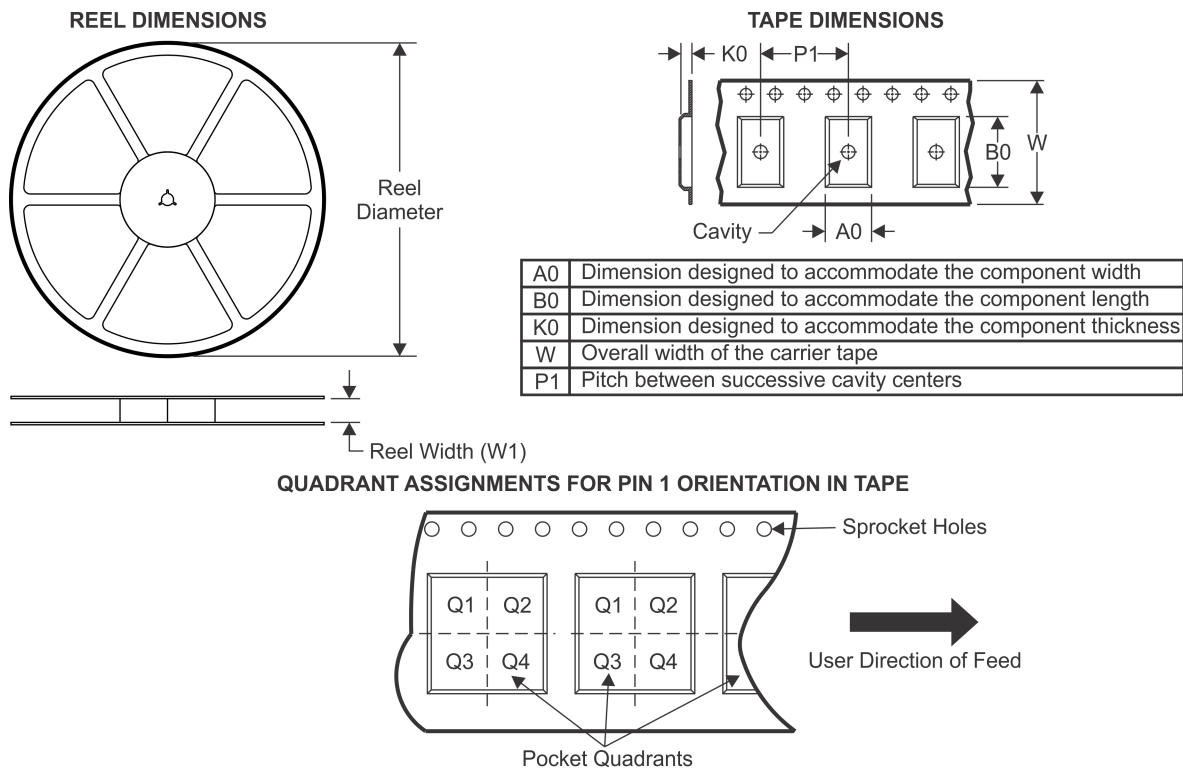
**Important Information and Disclaimer:** The information provided on this page represents TI's knowledge and belief as of the date that it is provided. TI bases its knowledge and belief on information provided by third parties, and makes no representation or warranty as to the accuracy of such information. Efforts are underway to better integrate information from third parties. TI has taken and

---

continues to take reasonable steps to provide representative and accurate information but may not have conducted destructive testing or chemical analysis on incoming materials and chemicals. TI and TI suppliers consider certain information to be proprietary, and thus CAS numbers and other limited information may not be available for release.

In no event shall TI's liability arising out of such information exceed the total purchase price of the TI part(s) at issue in this document sold by TI to Customer on an annual basis.



**TAPE AND REEL INFORMATION**


\*All dimensions are nominal

| Device          | Package Type | Package Drawing | Pins | SPQ  | Reel Diameter (mm) | Reel Width W1 (mm) | A0 (mm) | B0 (mm) | K0 (mm) | P1 (mm) | W (mm) | Pin1 Quadrant |
|-----------------|--------------|-----------------|------|------|--------------------|--------------------|---------|---------|---------|---------|--------|---------------|
| LM2904ITP/NOPB  | DSBGA        | YPB             | 8    | 250  | 178.0              | 8.4                | 1.5     | 1.5     | 0.66    | 4.0     | 8.0    | Q1            |
| LM2904ITPX/NOPB | DSBGA        | YPB             | 8    | 3000 | 178.0              | 8.4                | 1.5     | 1.5     | 0.66    | 4.0     | 8.0    | Q1            |
| LM2904MX        | SOIC         | D               | 8    | 2500 | 330.0              | 12.4               | 6.5     | 5.4     | 2.0     | 8.0     | 12.0   | Q1            |
| LM2904MX/NOPB   | SOIC         | D               | 8    | 2500 | 330.0              | 12.4               | 6.5     | 5.4     | 2.0     | 8.0     | 12.0   | Q1            |
| LM358AMX        | SOIC         | D               | 8    | 2500 | 330.0              | 12.4               | 6.5     | 5.4     | 2.0     | 8.0     | 12.0   | Q1            |
| LM358AMX/NOPB   | SOIC         | D               | 8    | 2500 | 330.0              | 12.4               | 6.5     | 5.4     | 2.0     | 8.0     | 12.0   | Q1            |
| LM358MX         | SOIC         | D               | 8    | 2500 | 330.0              | 12.4               | 6.5     | 5.4     | 2.0     | 8.0     | 12.0   | Q1            |
| LM358MX/NOPB    | SOIC         | D               | 8    | 2500 | 330.0              | 12.4               | 6.5     | 5.4     | 2.0     | 8.0     | 12.0   | Q1            |
| LM358TP/NOPB    | DSBGA        | YPB             | 8    | 250  | 178.0              | 8.4                | 1.5     | 1.5     | 0.66    | 4.0     | 8.0    | Q1            |
| LM358TPX/NOPB   | DSBGA        | YPB             | 8    | 3000 | 178.0              | 8.4                | 1.5     | 1.5     | 0.66    | 4.0     | 8.0    | Q1            |

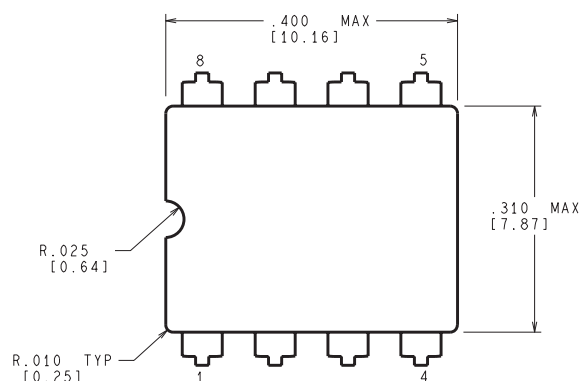
## TAPE AND REEL BOX DIMENSIONS



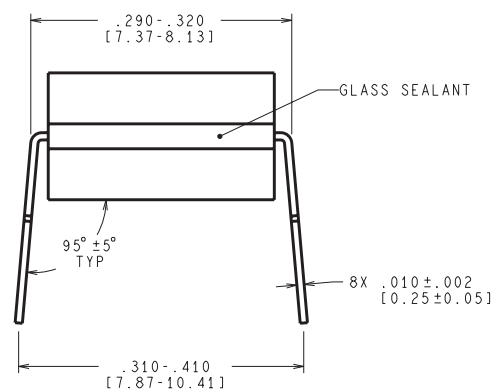
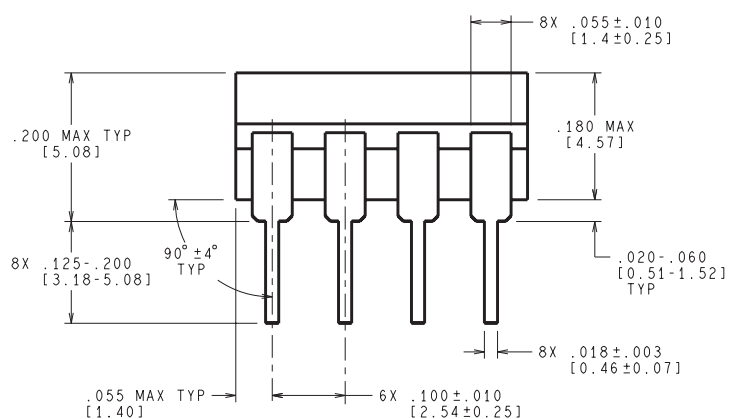
\*All dimensions are nominal

| Device          | Package Type | Package Drawing | Pins | SPQ  | Length (mm) | Width (mm) | Height (mm) |
|-----------------|--------------|-----------------|------|------|-------------|------------|-------------|
| LM2904ITP/NOPB  | DSBGA        | YPB             | 8    | 250  | 203.0       | 190.0      | 41.0        |
| LM2904ITPX/NOPB | DSBGA        | YPB             | 8    | 3000 | 206.0       | 191.0      | 90.0        |
| LM2904MX        | SOIC         | D               | 8    | 2500 | 349.0       | 337.0      | 45.0        |
| LM2904MX/NOPB   | SOIC         | D               | 8    | 2500 | 349.0       | 337.0      | 45.0        |
| LM358AMX        | SOIC         | D               | 8    | 2500 | 349.0       | 337.0      | 45.0        |
| LM358AMX/NOPB   | SOIC         | D               | 8    | 2500 | 349.0       | 337.0      | 45.0        |
| LM358MX         | SOIC         | D               | 8    | 2500 | 349.0       | 337.0      | 45.0        |
| LM358MX/NOPB    | SOIC         | D               | 8    | 2500 | 349.0       | 337.0      | 45.0        |
| LM358TP/NOPB    | DSBGA        | YPB             | 8    | 250  | 203.0       | 190.0      | 41.0        |
| LM358TPX/NOPB   | DSBGA        | YPB             | 8    | 3000 | 206.0       | 191.0      | 90.0        |

NAB0008A



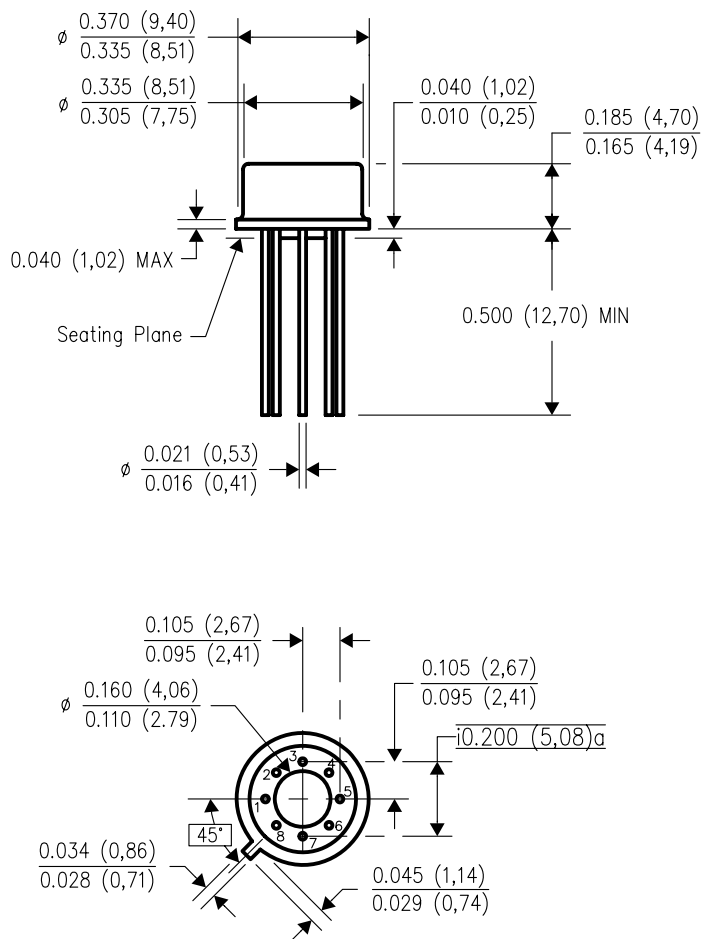
CONTROLLING DIMENSION IS INCH  
VALUES IN [ ] ARE MILLIMETERS



J08A (Rev M)

## LMC (O-MBCY-W8)

## METAL CYLINDRICAL PACKAGE

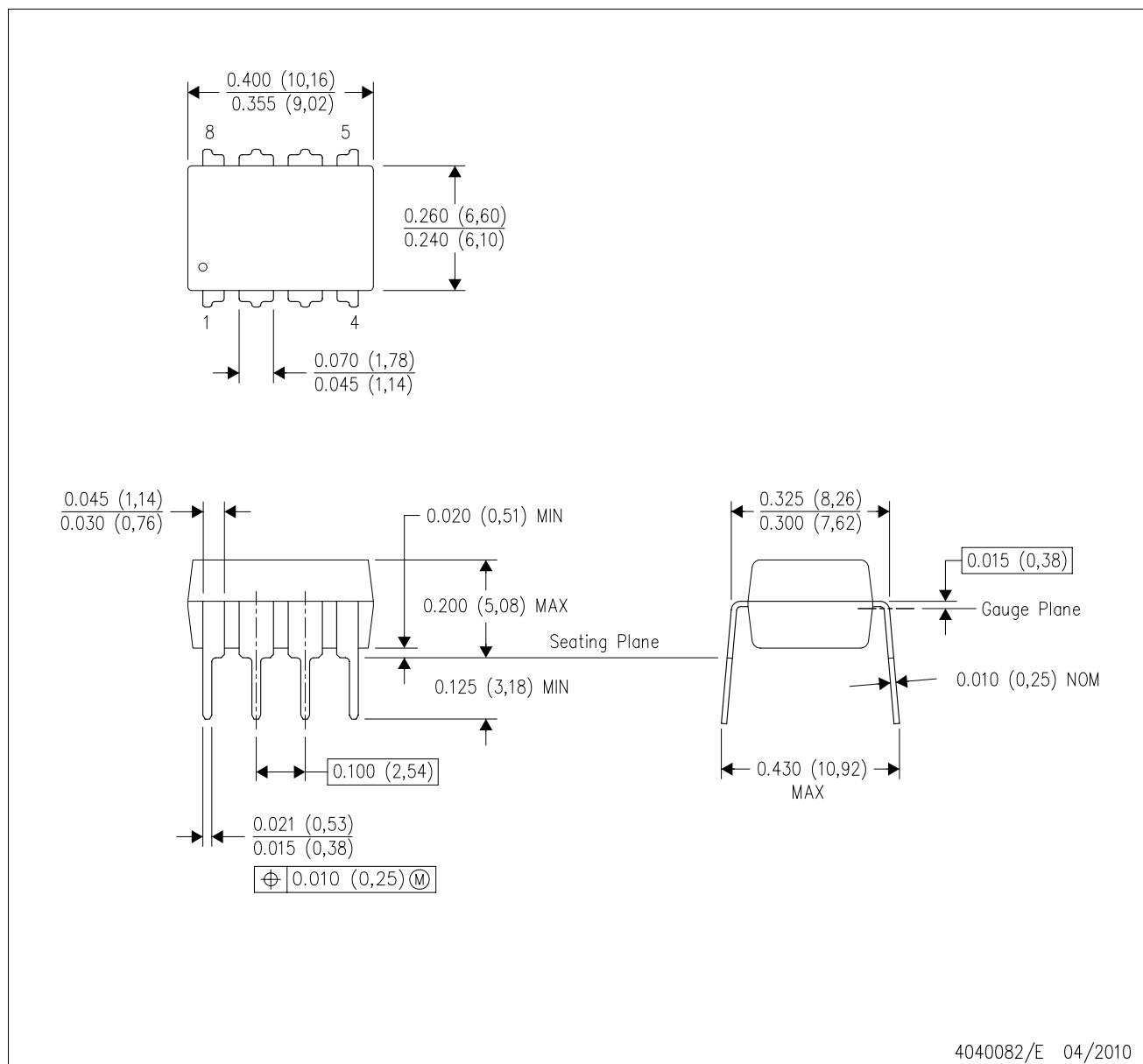


4202483/B 09/07

- NOTES:
- All linear dimensions are in inches (millimeters).
  - This drawing is subject to change without notice.
  - Leads in true position within 0.010 (0,25) R @ MMC at seating plane.
  - Pin numbers shown for reference only. Numbers may not be marked on package.
  - Falls within JEDEC MO-002/T0-99.

P (R-PDIP-T8)

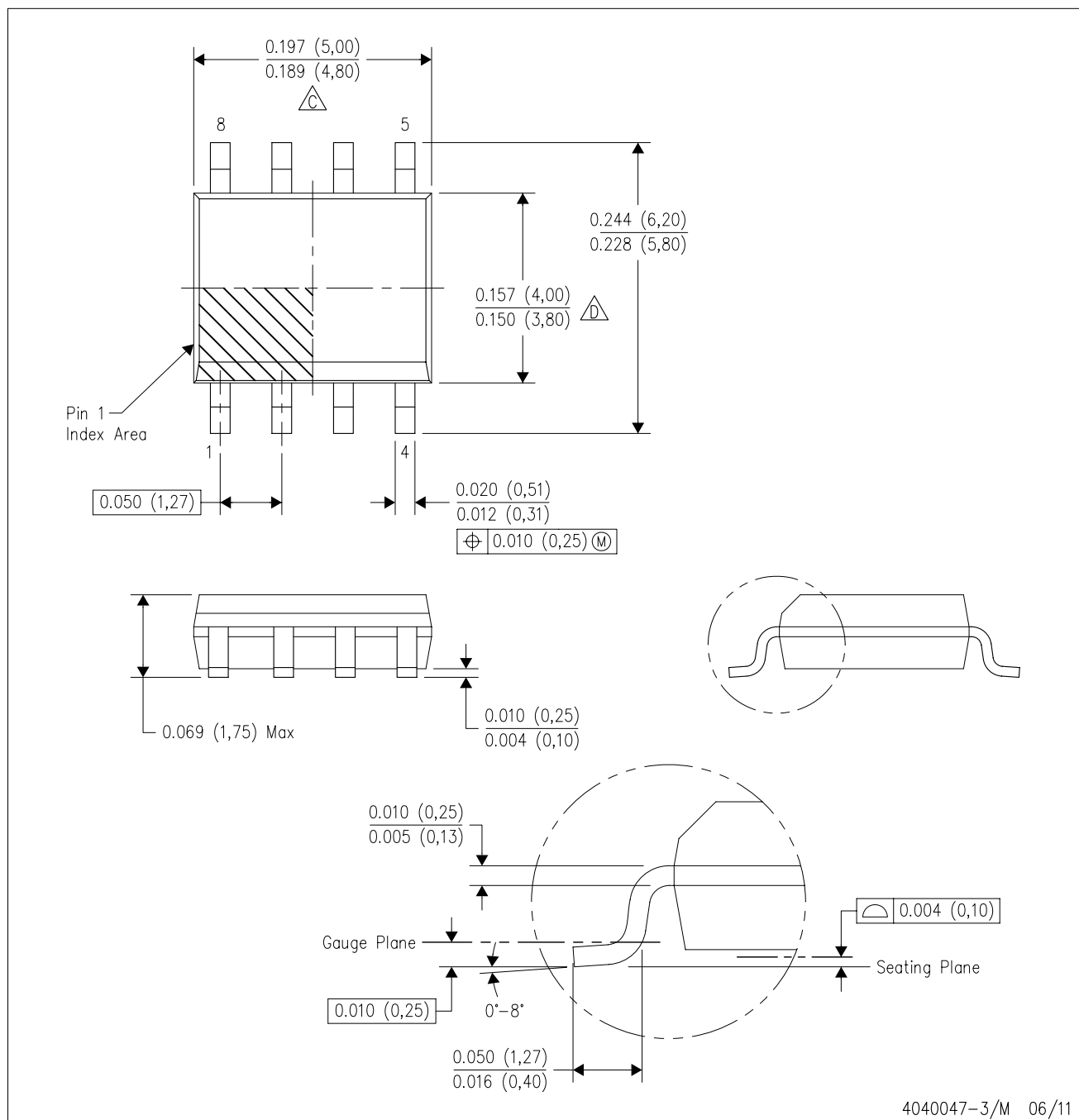
PLASTIC DUAL-IN-LINE PACKAGE



- NOTES:
- A. All linear dimensions are in inches (millimeters).
  - B. This drawing is subject to change without notice.
  - C. Falls within JEDEC MS-001 variation BA.

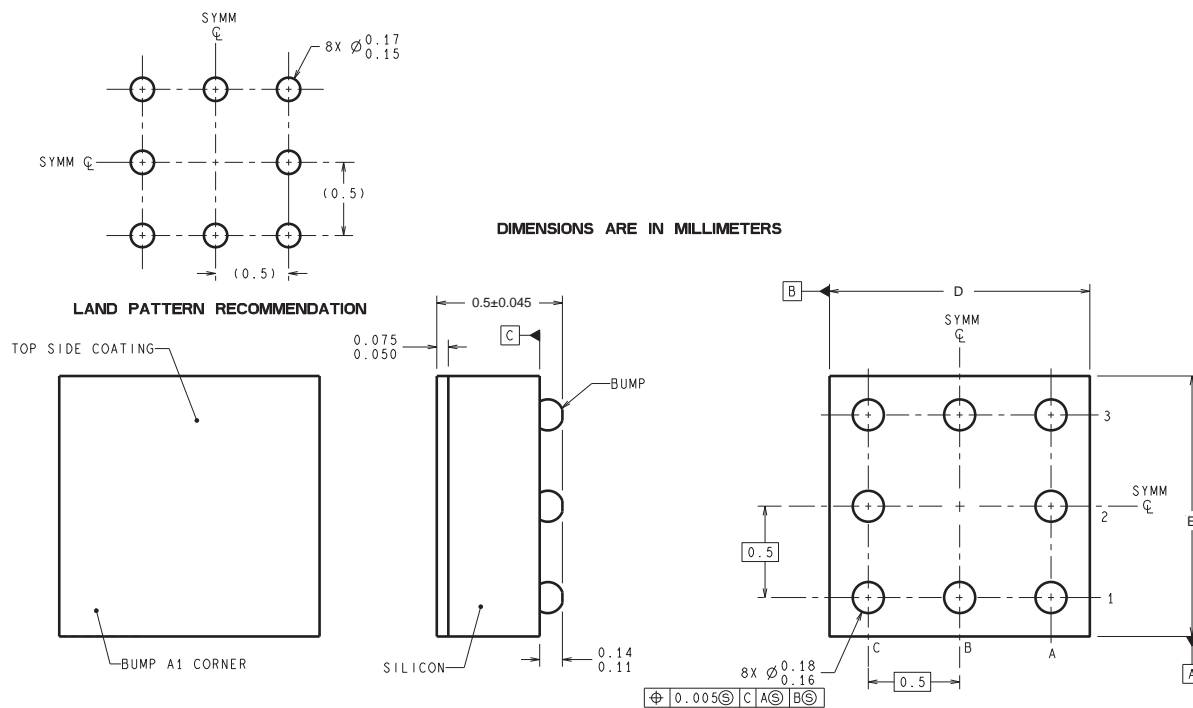
D (R-PDSO-G8)

PLASTIC SMALL OUTLINE



- NOTES:
- A. All linear dimensions are in inches (millimeters).
  - B. This drawing is subject to change without notice.
  - $\triangle C$  Body length does not include mold flash, protrusions, or gate burrs. Mold flash, protrusions, or gate burrs shall not exceed 0.006 (0,15) each side.
  - $\triangle D$  Body width does not include interlead flash. Interlead flash shall not exceed 0.017 (0,43) each side.
  - E. Reference JEDEC MS-012 variation AA.

YPB0008



TPA08XXX (Rev A)

D: Max = 1.357 mm, Min = 1.256 mm

E: Max = 1.357 mm, Min = 1.256 mm

4215100/A 12/12

NOTES: A. All linear dimensions are in millimeters. Dimensioning and tolerancing per ASME Y14.5M-1994.  
 B. This drawing is subject to change without notice.

## IMPORTANT NOTICE

Texas Instruments Incorporated and its subsidiaries (TI) reserve the right to make corrections, enhancements, improvements and other changes to its semiconductor products and services per JESD46, latest issue, and to discontinue any product or service per JESD48, latest issue. Buyers should obtain the latest relevant information before placing orders and should verify that such information is current and complete. All semiconductor products (also referred to herein as "components") are sold subject to TI's terms and conditions of sale supplied at the time of order acknowledgment.

TI warrants performance of its components to the specifications applicable at the time of sale, in accordance with the warranty in TI's terms and conditions of sale of semiconductor products. Testing and other quality control techniques are used to the extent TI deems necessary to support this warranty. Except where mandated by applicable law, testing of all parameters of each component is not necessarily performed.

TI assumes no liability for applications assistance or the design of Buyers' products. Buyers are responsible for their products and applications using TI components. To minimize the risks associated with Buyers' products and applications, Buyers should provide adequate design and operating safeguards.

TI does not warrant or represent that any license, either express or implied, is granted under any patent right, copyright, mask work right, or other intellectual property right relating to any combination, machine, or process in which TI components or services are used. Information published by TI regarding third-party products or services does not constitute a license to use such products or services or a warranty or endorsement thereof. Use of such information may require a license from a third party under the patents or other intellectual property of the third party, or a license from TI under the patents or other intellectual property of TI.

Reproduction of significant portions of TI information in TI data books or data sheets is permissible only if reproduction is without alteration and is accompanied by all associated warranties, conditions, limitations, and notices. TI is not responsible or liable for such altered documentation. Information of third parties may be subject to additional restrictions.

Resale of TI components or services with statements different from or beyond the parameters stated by TI for that component or service voids all express and any implied warranties for the associated TI component or service and is an unfair and deceptive business practice. TI is not responsible or liable for any such statements.

Buyer acknowledges and agrees that it is solely responsible for compliance with all legal, regulatory and safety-related requirements concerning its products, and any use of TI components in its applications, notwithstanding any applications-related information or support that may be provided by TI. Buyer represents and agrees that it has all the necessary expertise to create and implement safeguards which anticipate dangerous consequences of failures, monitor failures and their consequences, lessen the likelihood of failures that might cause harm and take appropriate remedial actions. Buyer will fully indemnify TI and its representatives against any damages arising out of the use of any TI components in safety-critical applications.

In some cases, TI components may be promoted specifically to facilitate safety-related applications. With such components, TI's goal is to help enable customers to design and create their own end-product solutions that meet applicable functional safety standards and requirements. Nonetheless, such components are subject to these terms.

No TI components are authorized for use in FDA Class III (or similar life-critical medical equipment) unless authorized officers of the parties have executed a special agreement specifically governing such use.

Only those TI components which TI has specifically designated as military grade or "enhanced plastic" are designed and intended for use in military/aerospace applications or environments. Buyer acknowledges and agrees that any military or aerospace use of TI components which have **not** been so designated is solely at the Buyer's risk, and that Buyer is solely responsible for compliance with all legal and regulatory requirements in connection with such use.

TI has specifically designated certain components as meeting ISO/TS16949 requirements, mainly for automotive use. In any case of use of non-designated products, TI will not be responsible for any failure to meet ISO/TS16949.

### Products

|                              |                                                                                      |
|------------------------------|--------------------------------------------------------------------------------------|
| Audio                        | <a href="http://www.ti.com/audio">www.ti.com/audio</a>                               |
| Amplifiers                   | <a href="http://amplifier.ti.com">amplifier.ti.com</a>                               |
| Data Converters              | <a href="http://dataconverter.ti.com">dataconverter.ti.com</a>                       |
| DLP® Products                | <a href="http://www.dlp.com">www.dlp.com</a>                                         |
| DSP                          | <a href="http://dsp.ti.com">dsp.ti.com</a>                                           |
| Clocks and Timers            | <a href="http://www.ti.com/clocks">www.ti.com/clocks</a>                             |
| Interface                    | <a href="http://interface.ti.com">interface.ti.com</a>                               |
| Logic                        | <a href="http://logic.ti.com">logic.ti.com</a>                                       |
| Power Mgmt                   | <a href="http://power.ti.com">power.ti.com</a>                                       |
| Microcontrollers             | <a href="http://microcontroller.ti.com">microcontroller.ti.com</a>                   |
| RFID                         | <a href="http://www.ti-rfid.com">www.ti-rfid.com</a>                                 |
| OMAP Applications Processors | <a href="http://www.ti.com/omap">www.ti.com/omap</a>                                 |
| Wireless Connectivity        | <a href="http://www.ti.com/wirelessconnectivity">www.ti.com/wirelessconnectivity</a> |

### Applications

|                               |                                                                                          |
|-------------------------------|------------------------------------------------------------------------------------------|
| Automotive and Transportation | <a href="http://www.ti.com/automotive">www.ti.com/automotive</a>                         |
| Communications and Telecom    | <a href="http://www.ti.com/communications">www.ti.com/communications</a>                 |
| Computers and Peripherals     | <a href="http://www.ti.com/computers">www.ti.com/computers</a>                           |
| Consumer Electronics          | <a href="http://www.ti.com/consumer-apps">www.ti.com/consumer-apps</a>                   |
| Energy and Lighting           | <a href="http://www.ti.com/energy">www.ti.com/energy</a>                                 |
| Industrial                    | <a href="http://www.ti.com/industrial">www.ti.com/industrial</a>                         |
| Medical                       | <a href="http://www.ti.com/medical">www.ti.com/medical</a>                               |
| Security                      | <a href="http://www.ti.com/security">www.ti.com/security</a>                             |
| Space, Avionics and Defense   | <a href="http://www.ti.com/space-avionics-defense">www.ti.com/space-avionics-defense</a> |
| Video and Imaging             | <a href="http://www.ti.com/video">www.ti.com/video</a>                                   |

### TI E2E Community

[e2e.ti.com](http://e2e.ti.com)